

COUNTY OF LOS ANGELES

ROAD DEPARTMENT



1955

PALMDALE QUAD

BENCH MARKS

NGVD29 DATUM

PREFACE

The Road Department level net is composed of more than 1,000 miles of levels supporting in excess of 10,000 bench marks. In 1964-65, a major readjustment of the net was undertaken. To emphasize the complete break with previous elevations, the SY, SG & SL series bench marks have been re-labeled BY, BG & BL, respectively.

To facilitate the adjustment, indexing, and distribution of adjusted values of the net, the County territory was divided into 31 quads or areas. For identification purposes each quad was given a name, viz., "Rosemead," "La Mirada," "Santa Fe," etc. When bench marks and elevations in the Road Department net are used, the name of the quad in which the bench mark is located and the date of the adjustment of the elevation must be included in the bench mark description, e.g.,

BG 1887 --L+BN IN CONC HDWL OF DRAIN PIPE UNDER DR 218 FT
NE +18 FT SE C/L INT SAN JOSE HILLS RD +CAMERON AVE MKD (BM)
(COVINA --1965) ELEV. 696.238

It is expected that this general adjustment will, for the most part, remain sound for the next 8 to 12 years. As new circuits are completed, however, re-adjustment of individual quads may become advisable. It is expected that these subsequent adjustments will be in the nature of a few hundredths of a foot. When a quad is re-adjusted, new elevation lists will be published and the date of the re-adjustment will replace the "1965" at the end of the bench mark description. Two bench marks in the same quad with different adjustment dates will not normally join each other. Since all adjustments taper out to nothing at the periphery of the quad, any bench mark in one quad will join any bench mark in another quad regardless of their respective adjustment dates.

The basic accuracy of the net is reflected by an indicated field probable error of plus or minus 0.012 foot per mile of leveling as determined from 298 conditions of closure. However, many years experience in vertical control in the greater Los Angeles basin and Antelope Valley indicate that because of varying degrees of subsidence and heaving, the true datum is recovered only by obtaining substantial agreement of a number of bench marks.

The users of this net are invited to assist in its maintenance by notifying this Department of cases of obliteration, apparent mistakes in descriptions or elevations, and proven disturbance of bench marks.

DATUM: U. S. Coast and Geodetic Survey Sea Level Datum
of 1929, through the medium of the Los Angeles
County Engineer Precise Level Net, 1963 Adjust-
ment.

ABBREVIATIONS USED IN BENCH MARK LISTINGS

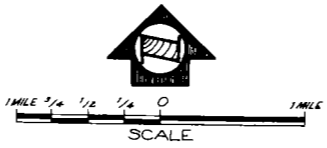
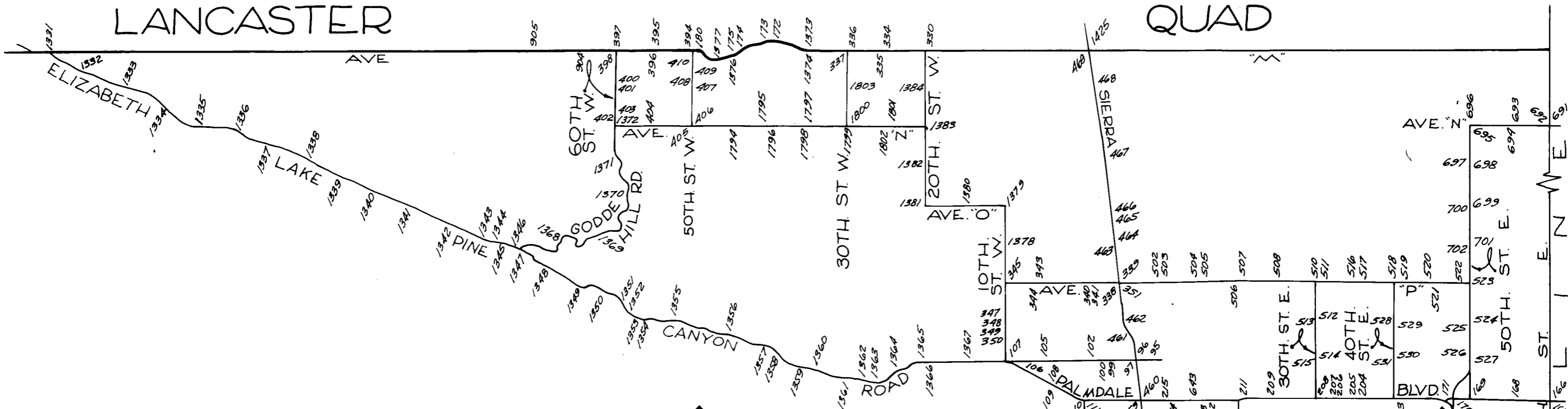
ABUT - - - - -	Abutment	EC - - - - -	End of Curve
ALG - - - - -	Along	ENT - - - - -	Entrance
ANG PT - - - - -	Angle Point	FL - - - - -	Floor
B/W - - - - -	Back of Walk	FTG - - - - -	Footing
BCR - - - - -	Beginning of Curb Return	F/W - - - - -	Front of Walk
BC - - - - -	Beginning of Curve	GAR - - - - -	Garage
BLDG - - - - -	Building	HDWL - - - - -	Headwall
BM - - - - -	Bench Mark	HSE - - - - -	House
BT SPK - - - - -	Boat or Bolt Spike	INT - - - - -	Intersection
BR CAP - - - - -	Brass or Bronze Cap	IP - - - - -	Iron Pipe
C B - - - - -	Catch Basin	LT - - - - -	Left
CTR - - - - -	Center	LACE - - - - -	L. A. City Engineer
C/L - - - - -	Center Line	LACS - - - - -	L. A. County Engineer
C/L INT - - - - -	Center Line Intersection	LAFC - - - - -	L. A. Co. Flood Control
C/L PROD - - - - -	Center Line Produced	L+BN - - - - -	Lead and Bench Nail
CONC - - - - -	Concrete	L+BR - - - - -	Lead and Brad
COR - - - - -	Corner	L+N - - - - -	Lead and Nail
COE - - - - -	Corps of Engineers	L+RDBM TAG - - - - -	Lead and Road Dept. Bench Mark Tag
CULV - - - - -	Culvert	L+SPK - - - - -	Lead and Spike
CB - - - - -	Curb	L+T - - - - -	Lead and Tack
CS MON - - - - -	County Engineer Monument	MCR - - - - -	Middle of Curb Return
CS BR CAP - - - - -	County Engineer Brass Cap	MKD - - - - -	Marked
CT SPK - - - - -	Cut Spike	MC - - - - -	Middle of Curve
DR - - - - -	Drive or Driveway	MON - - - - -	Monument
E/O - - - - -	East of	N/O - - - - -	North of
ECR - - - - -	End of Curb Return	NR - - - - -	Near

ABBREVIATIONS USED IN BENCH MARK LISTINGS . . . CONTINUED

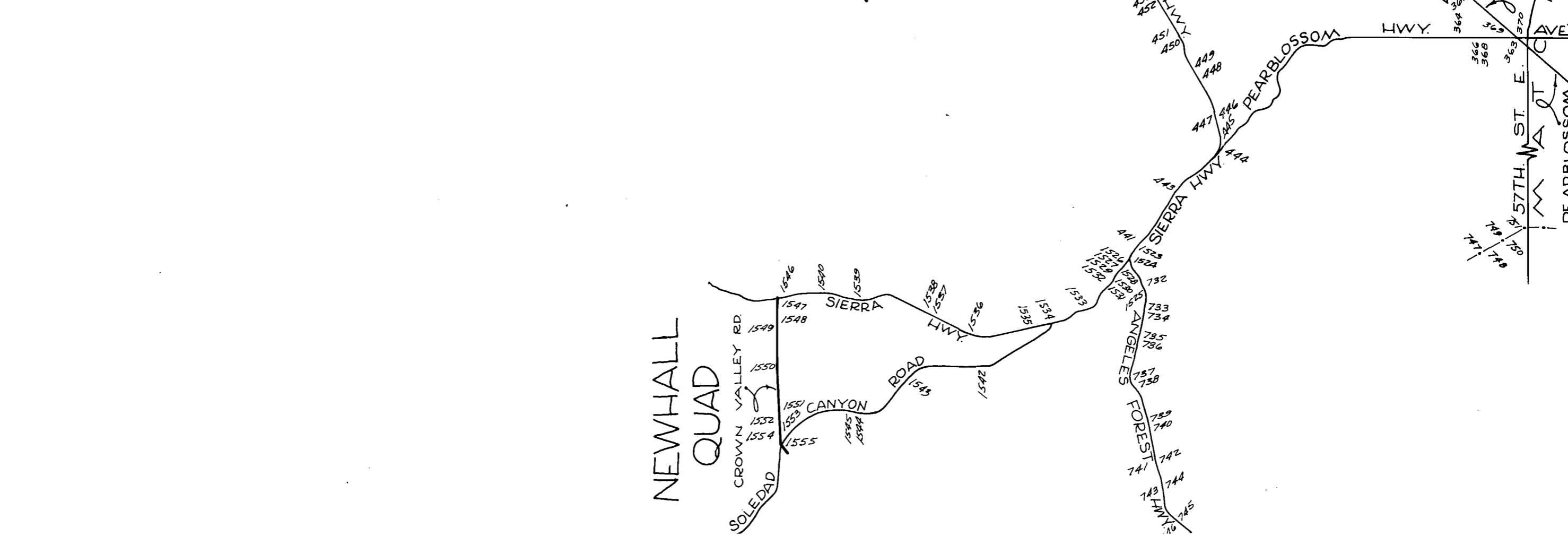
OPP - - - - - Opposite
PI - - - - - Point of Intersection
PK+W - - - - - PK Nail and Washer
P/L - - - - - Property Line
POST - - - - - Point on Semi-Tangent
PP - - - - - Power Pole
PVMT - - - - - Pavement
PROD - - - - - Produced
RD - - - - - Road
RDEM - - - - - Road Dept. Bench Mark
RR - - - - - Railroad
RT - - - - - Right
R/W - - - - - Right of Way
SDMH - - - - - Storm Drain Manhole
SMH - - - - - Sewer Manhole
SPK - - - - - Spike
ST+W - - - - - Spike Tin and Washer
S/O - - - - - South of
TP - - - - - Telephone Pole
USC+GS - - - - - U. S. Coast and Geodetic Survey
USGS - - - - - U. S. Geological Survey
WK - - - - - Walk
W/O - - - - - West of

LANCASTER

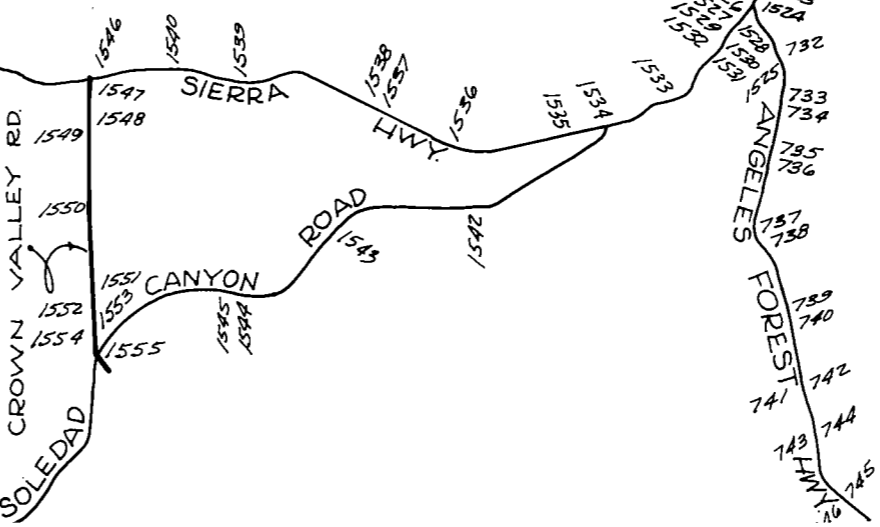
QUAD



PALMDALE QUAD (WEST)



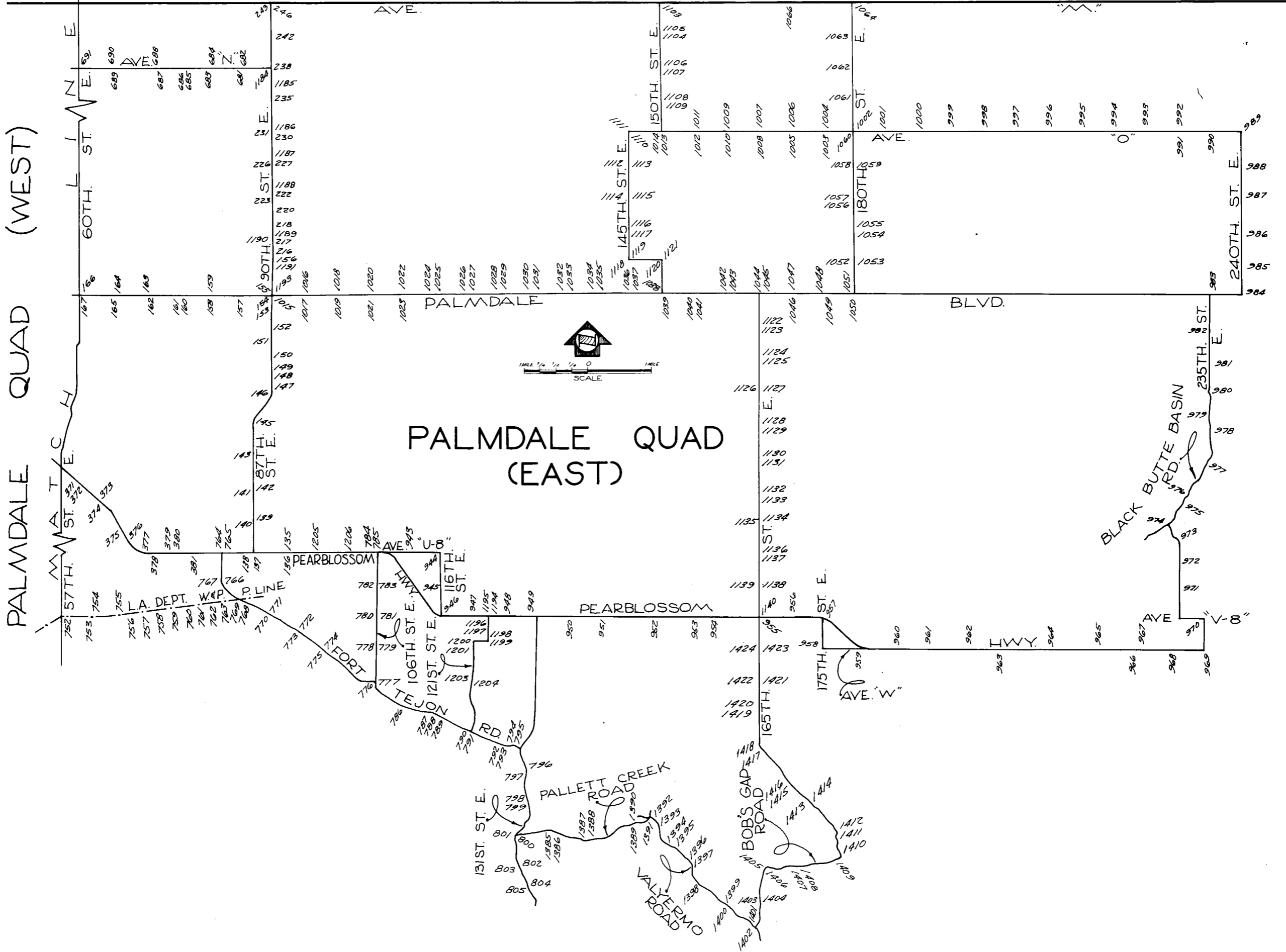
NEWHALL QUAD



PALMDALE QUAD (EAST)

LANCASTER QUAD

PALMDALE QUAD (WEST)



ANGELES COUNTY
 BERNARDINO COUNTY
 LOS ANGELES COUNTY
 SAN BERNARDINO COUNTY

QUAD-YEAR	ELEV	D E S C R I P T I O N (INCLUDE QUAD AND YEAR IN DESCRIPTION)	BM NUMBER
PALMDALE (1955)	2632.871	L+BN 2.5FT N BCR @ NE COR RAMBLER AVE + AVE Q	SL 95
PALMDALE (1955)	2633.431	L+BN 11FT W BCR NW COR RAMBLER AVE + AVE Q	SL 96
PALMDALE (1955)	2640.539	USC+GS DISK IN TOP OF CONC POST 52.7FT SE SIGNAL NO 4132 124FT S C/L AVE Q + 32FT E C/L OF SPRR TRACKS MKD (H 426 1935)	SL 97
PALMDALE (1955)	2643.639	L+T 5FT E BCR @ SE COR AVE Q + SUMAC AVE	SL 99
PALMDALE (1955)	2644.366	L+T 5FT E BCR @ SE COR AVE Q + 3RD ST E	SL 100
PALMDALE (1955)	2639.964	L+BN 5FT W BCR @ NW COR AVE Q + CAROLSIDE AVE	SL 102
PALMDALE (1955)	2568.067	CS MON IN WELL CN C/L AVE Q 2670 FT W OF DIVISION ST	SL 105
PALMDALE (1955)	2682.858	USGS BR DISK IN CONC 1FT UP 45FT S C/L AVE Q + 85FT N C/L PALMDALE BLVD MKD (LS 66 1929)	SL 106
PALMDALE (1955)	2693.322	CS MON @ C/L INT 10TH ST W + AVE Q (W EDGE)	SL 107
PALMDALE (1955)	2682.512	CS MON ON C/L PALMDALE BLVD 0.6MI E OF 10TH ST W MKD (STA 30+30.44)	SL 108
PALMDALE (1955)	2682.954	SPK + W 7FT S C/L PALMDALE BLVD 0.65MI E OF 10TH ST W	SL 109
PALMDALE (1955)	2683.278	2IN IP FLUSH @ PI OF CURVE OF DIVISION ST 35FT S C/L PALMDALE BLVD (NE RIM)	SL 110
PALMDALE (1955)	2682.224	L+T 5 CB OF N SERVICE RD OF PALMDALE BLVD 70FT E C/L DIVISION ST + 45FT N C/L PALMDALE BLVD	SL 111
PALMDALE (1955)	2717.204	CS MON @ C/L INT AVE R + DIVISION ST	SL 112
PALMDALE (1955)	2720.100	CS MON 40FT W C/L DIVISION ST + 40FT N C/L PROD AVE R MKD (BM R-1)	SL 113
PALMDALE (1955)	2669.972	L+T 1FT E BCR @ NE COR AVE R + 6TH ST E	SL 114
PALMDALE (1955)	2666.693	CS MON @ C/L INT AVE R + SIERRA HWY PROD FROM THE N (E EDGE)	SL 115
PALMDALE (1955)	2652.235	CS MON 12IN DN @ C/L INT AVE R + 10TH ST E	SL 116
PALMDALE (1955)	2651.929	SPK + L 8FT E BCR @ SE COR 11TH ST E + AVE R	SL 117
PALMDALE (1955)	2935.801	STD DISK 4IN UP 32FT N C/L PEARBLOSSOM HWY + 0.5 MI E OF 87TH ST E 450FT E OF CULV NC 1-585+29 + 84FT E TP NO 543957H MKD (H 306 1935)	SL 135
PALMDALE (1955)	2932.183	RDBM TAG W END OF CONC HDWL OF CULV 15FT S C/L PEARBLOSSOM HWY + 0.5 MI E OF 87TH ST E 45FT E TP NO 543955H	SL 136
PALMDALE (1955)	2911.696	L+T IN CONC PORCH OF VILLA CAFE ON W SIDE OF BLDG NO 8640 PEARBLOSSOM HWY 65FT S C/L + 40FT W 87TH ST E 5FT S + 1FT W OF NW COR OF BLDG E	SL 138

QUAD-YEAR	ELEV	DESCRIPTION (INCLUDE QUAD AND YEAR IN DESCRIPTION)	BM NUMBER
PALMDALE (1955)	2857.082	CS MON IN WELL @ CR NR C/L INT U AVE + 87TH ST E MKD (SEC COR SEC 12,13,7,18)	SL 139
PALMDALE (1955)	2860.316	RDBM TAG ON N SIDE OF CONC FTG OF 2IN FENCE POST 135FT W C/L 87TH ST E + 25FT S C/L AVE U	SL 140
PALMDALE (1955)	2815.641	L+T @ SE COR CONC WLK @ SE COR HSE NO 8660 AVE T-8 + 55FT W C/L 87TH ST E 100FT S C/L	SL 141
PALMDALE (1955)	2814.090	CS MON 10IN DN @ C/L INT AVE T-8 + 87TH ST E MKD (1/4 SEC COR R10W R11W T5N SEC 7-12)	SL 142
PALMDALE (1955)	2776.427	CS MON CN C/L AVE T 10FT W C/L 87TH ST E MKD (SEC COR 1-6-12-7 R11W R5N R10W) (N EDGE)	SL 143
PALMDALE (1955)	2743.633	SPK IN WIER BDX @ NW COR 90TH ST E + AVE S-8 20FT N + 30FT W OF C/L INT	SL 145
PALMDALE (1955)	2711.975	CS MON @ C/L INT 90TH ST E + AVE S MKD (SEC 31 32 T6N R10W)	SL 146
PALMDALE (1955)	2712.990	L+T IN CTR OF ISL W SIDE OF UNION GAS STA @ NE COR AVE S + 90TH ST E 80FT N + 65FT E C/L INT	SL 147
PALMDALE (1955)	2699.013	RDBM TAG + N IN CTR OF CONC BASE OF TELEPHONE BOOTH @ NW COR BLDG NO 37356 90TH ST E 90FT E C/L + 95FT S C/L AVE R-12	SL 148
PALMDALE (1955)	2692.145	L+T @ NE COR OF CONC SLAB IN FRONT OF HSE NO 37454 90TH ST E 65FT E C/L + 55FT S C/L AVE R-10	SL 149
PALMDALE (1955)	2685.285	RDBM TAG + N @ SW COR OF CONC SLAB 25FT N C/L AVE R-8 + 45FT E C/L 90TH ST E	SL 150
PALMDALE (1955)	2671.217	L+T @ SE COR OF CONC SLAB @ SE COR OF CONC BLOCK BLDG NO 37855 90TH ST E 130FT W C/L + 500FT N AVE R-4	SL 151
PALMDALE (1955)	2662.946	CS MON 15IN DN @ C/L INT 90TH ST E + AVE R MKD (SEC COR 29,30,31,32 R10W T6N)	SL 152
PALMDALE (1955)	2655.348	L+T SE COR CONC SLAB IN FRONT OF DOOR ON S SIDE OF HSE NO 38161 90TH ST E 195FT W C/L + 75FT S C/L AVE Q-1C	SL 153
PALMDALE (1955)	265 ⁴⁵ .282	L+T IN N END OF GAS ISL TO SERVICE STA @ SW COR PALMDALE BLVD + 90TH ST E 74FT S + 63FT W C/L INT	SL 154A
PALMDALE (1955)	2645.323	L+T IN SE COR BLDG NO 8849 PALMDALE BLVD 62FT N C/L + 129FT W C/L 90TH ST E	SL 155
PALMDALE (1955)	2627.906	USC+GS MON IN CONC POST 40FT N + 30FT E C/L INT AVE Q + 90TH ST E MKD (LS 30 1929)	SL 156
PALMDALE (1955)	2645.309	RDBM MON IN WELL 6FT S C/L PALMDALE BLVD + 0.5 MI W 90TH ST E 33FT W TP NO 583344H	SL 157
PALMDALE (1955)	2642.406	CS MON 24IN DN CN C/L PALMDALE BLVD 1.0 MI W 90TH ST E MKD (1/4 COR SECS 25,30 R10W R11W T6N)	SL 158
PALMDALE (1955)	2644.995	RDBM TAG IN CONC + ROCK FTG OF IRON FENCE POST + 27FT N C/L PALMDALE BLVD + 1.0 MI W 90TH ST E	SL 159
PALMDALE (1955)	2641.164	L+T IN NE COR OF CONC SLAB @ E SIDE OF HSE 100FT E 75TH ST E + 115FT S C/L PALMDALE BLVD 1.5 MI W 90TH ST E	SL 160

QUAD-YEAR	ELEV	DESCRIPTION (INCLUDE QUAD AND YEAR IN DESCRIPTION)	BM NUMBER
PALMDALE (1955)	2639.961	RDBM MON IN WELL 8FT S + 100FT E OF C/L INT 75TH ST E + PALMDALE BLVD 1.5 MI W OF 90TH ST E	SL 161
PALMDALE (1955)	2640.565	L+T IN SE COR CONC PORCH TO HSE NO 7020 PALMDALE BLVD 175FT S C/L + 225FT E C/L 70TH ST E 2.0MI W OF 90TH ST E	SL 162
PALMDALE (1955)	2636.450	CS MON 24IN DN @ C/L INT PALMDALE BLVD + 70TH ST E (1/4 COR SECS 25, 26 R11W T6N)	SL 163
PALMDALE (1955)	2635.640	CS MON 2IN UP 50FT N C/L PALMDALE BLVD + 50FT E C/L 65TH ST E 2.5 MI W OF 90TH ST E (N EDGE)	SL 164
PALMDALE (1955)	2635.076	CS MON IN WELL @ C/L INT PALMDALE BLVD + 65TH ST E MKD (CTR SEC 26 R11W T6N RE 5869)	SL 165
PALMDALE (1955)	2628.944	CS MON 50FT N C/L PALMDALE BLVD + 50FT E C/L 60TH ST E MKD (RE 63) (E EDGE)	SL 166
PALMDALE (1955)	2627.345	CS MON 18IN DN CN C/L 60TH ST E ON C/L PROD OF PALMDALE BLVD FROM THE E MKD (1/4 COR SEC 26, 27 R11W T6N) (USE E EDGE)	SL 167
PALMDALE (1955)	2625.473	CS MON 40FT E C/L 55TH ST E + 50FT N C/L PALMDALE BLVD 3FT NW PP NO 971017E	SL 168
PALMDALE (1955)	2618.439	CS MON 3IN UP 25FT N C/L PALMDALE BLVD + 55FT E C/L 50TH ST E MKD (RE 63)	SL 169
PALMDALE (1955)	2616.041	USGS MON 57FT S C/L PALMDALE BLVD + 58FT E C/L 47TH ST E MKD (LS 25 1929)	SL 170
PALMDALE (1955)	2614.834	USC+GS MON UP 4IN 232FT W C/L 47TH ST E + 45FT N C/L PALMDALE BLVD MKD (E-306 1955)	SL 171
BASELINE (1955)	2493.837	USC+GS DISK IN CONC POST 92FT N + 65FT W C/L INT AVE M + 40TH ST W MKD (F 489 1955)	SL 172A
BASELINE (1955)	2470.198	USC+GS DISK IN CONC POST 106FT W C/L 40TH ST W + 0.1 MI N AVE M 150FT S OF E-W RUNWAY QUARTZ HILL AIRPORT MKD (G 489 1955)	SL 173A
BASELINE (1955)	2453.145	USC+GS DISK IN CONC POST @ QUARTZ HILL AIRPORT WIND INDICATOR 90FT S OF E-W RUNWAY MKD (H 489 1955)	SL 174A
BASELINE (1955)	2452.575	USC+GS DISK IN CONC GASLINE STAND 150FT E OF SE COR OF HANGAR @ QUARTZ HILL AIRPORT MKD (J 489 1955)	SL 175A
BASELINE (1955)	2495.032	L+T CONC SLAB SW COR PORCH TO HSE NO 42002 50TH ST W 48FT N + 66FT E C/L INT 50TH ST W + AVE M	SL 180A
PALMDALE (1955)	2605.848	RD MON IN WELL FLUSH IN CTR OF E MAC LANE OF 40TH ST E 161FT S + 7FT E OF C/L INT PALMDALE BLVD + 40TH ST E MKD (LA CO RD 1959)	SL 203A
PALMDALE (1955)	2595.155	L+BN E CB 35TH ST E 175FT N C/L PALMDALE BLVD	SL 204
PALMDALE (1955)	2595.465	RDBM TAG W CB 35TH ST E 155FT N C/L PALMDALE BLVD	SL 205
PALMDALE (1955)	2600.589	RDBM TAG N CB OF SERVICE RD TO PALMDALE BLVD @ NW COR PALMDALE BLVD + 32ND ST E 1.5FT W OF BCR	SL 206
PALMDALE (1955)	2597.474	L+BRAD 2FT W OF BCR @ NW COR AVE Q-7 + FRONTIER AVE 30FT N + 50FT W C/L INT	SL 207

QUAD-YEAR	ELEV	DESCRIPTION (INCLUDE QUAD AND YEAR IN DESCRIPTION)	BM	NUMBER
PALMDALE (1955)	2599.511	L+BRAD 4FT E BCR @ NE COR AVE Q-7 + 30TH ST E 80FT E + 30FT N C/L INT	SL	208
PALMDALE (1955)	2605.093	L+T @ NE COR CONC PORCH HSE NO 2521 PALMDALE AVE 90FT N C/L PALMDALE AVE + 0.5 MI E OF 20TH ST E	SL	209
PALMDALE (1955)	2611.286	L+T 3FT E OF W EDGE OF S CONC ISL STANDARD GAS STATION NE COR PALMDALE BLVD + 20TH ST E	SL	211B
PALMDALE (1955)	2620.838	L+BN 1FT E BCR S CB SERVICE RD SE COR PALMDALE BLVD + 16TH ST E	SL	212A
PALMDALE (1955)	2626.418	L+BN IN MCR @ SW COR 15TH ST E + PALMDALE BLVD	SL	213A
PALMDALE (1955)	2635.235	L+T IN 4FT CONC WLK TO BLDG NO 1154 PALMDALE BLVD 61FT W + 50FT S OF C/L INT PALMDALE BLVD + 12TH ST E	SL	214A
PALMDALE (1955)	2643.270	CS MON 11IN DN ON C/L 10TH ST E + 142FT N OF C/L INT PALMDALE BLVD + 10TH ST E MKD (1/4 SEC COR 26, 25, T6N R12W 1928) (USE N EDGE)	SL	215
PALMDALE (1955)	2624.324	L+BN W SIDE CONC FTG FOR SURGE + BREATHER PIPE 850FT N AVE Q + 60FT E C/L OF 90TH ST E 90FT NE OF PP NO 373194E	SL	216A
PALMDALE (1955)	2616.889	L+BN W SIDE STAND PIPE AROUND SURGE + BREATHER PIPE 0.4 MI N AVE Q + 60FT E C/L 90TH ST E OPP PP NO 373189E	SL	217
PALMDALE (1955)	2613.142	L+BN NW COR CONC SLAB FRONT OF PUMP HSE 0.55 MI N AVE Q + 45FT E C/L 90TH ST E 33FT N OF TRANSF POLES NO 878724E + NO 878724E	SL	218
PALMDALE (1955)	2610.005	L+T W EDGE STAND PIPE AROUND SURGE + BREATHER PIPE 0.8 MI N AVE Q 60FT E C/L 90TH ST E 25FT S + 85FT E PP NO 373180E	SL	220A
PALMDALE (1955)	2603.463	L+BN NR SW COR OLD CONC FTG 50FT E + 35FT N C/L INT AVE P + 90TH ST E	SL	222A
PALMDALE (1955)	2605.305	L+T NR N END CONC WLK TO HSE NO 39541 90TH ST E 300FT S + 145FT W OF C/L INT AVE P + 90TH ST E	SL	223
PALMDALE (1955)	2588.806	CS MON 18 IN DN @ AVE 0-8 + 90TH ST E MKD (T6N R10W SEC 18, 17 1/4 COR) USE NE EDGE	SL	226
PALMDALE (1955)	2588.949	L+BN SE COR CONC FTG OF SMALL TANK 15FT S OF ELEC PUMP 300FT N OF AVE 0-8 P 60FT E OF C/L 90TH ST E	SL	227
PALMDALE (1955)	2575.748	RDBM TAG CONC FTG OF 8FT CHAIN LINK FENCE AROUND EDISON SUB STA 30FT S + 30FT E C/L INT OF 90TH ST E + AVE C	SL	230A
PALMDALE (1955)	2575.950	RR SPK IN BASE OF PP 200FT NW OF SO CAL EDISON TRANSFORMER STA WHERE BRANCH POWER LINES TAKE OFF TO THE E NR INT 90TH ST E + AVE D MKD (USBM 2576)	SL	231A
PALMDALE (1955)	2560.107	CS MON C/L INT 90TH ST E + PROP AVE N-8 MKD (1/4 COR SEC 7, 8 T6N R10W)	SL	235A
PALMDALE (1955)	2551.530	CS MON 18IN DN @ C/L INT 90TH ST E + AVE N MKD (T6N R10W SEC COR 5, 6, 7, 8) USE NW COR	SL	238A

QUAD-YEAR	ELEV	DESCRIPTION (INCLUDE QUAD AND YEAR IN DESCRIPTION)	BM NUMBER
PALMDALE (1955)	2535.201	CS MON @ C/L INT AVE M-8 + 90TH ST E 2640FT N C/L AVE N MKD (T6N R10W 1/4 SEC COR 5,6)	SL 242
PALMDALE (1955)	2536.307	2IN IP 1FT UP 40FT N OF AVE M-8 + 40FT W C/L 90TH ST E (USE W EDGE)	SL 243
BASELINE (1955)	2523.621	CS MON @ C/L INT OF AVE M + 90TH ST E T6N T7N R10W SEC COR 31,32-5(6 1925 USE N EDGE)	SL 246A
BASELINE (1955)	2522.971	USC+GS BRASS DISK IN TOP OF CONC POST 4IN UP 208FT E OF C/L 20TH ST W + 33FT N C/L AVE M 5FT W OF PP NO 1054573-E MKD (D489 155)	SL 330A
BASELINE (1955)	2517.972	CS BR CAP MON @ C/L INT 25TH ST W + AVE M MKD (1/4 SEC CCR 32-5 T6N R12W) USE W EDGE	SL 334A
BASELINE (1955)	2523.106	L+T IN SE COR OF CONC DR TO HSE NO 2524 AVE M 140FT S C/L + 215FT W C/L 25TH ST W	SL 335A
BASELINE (1955)	2519.926	BR DISK IN TOP OF CONC POST 4IN UP 300FT E C/L 30TH ST W + 34FT N C/L AVE M 6FT W PP NO 105459E	SL 336A
BASELINE (1955)	2514.635	CS BR CAP MON @ C/L INT AVE M + 30TH ST W MKD (SEC CCR 31-32, 5-6 T7N R12W)	SL 337A
PALMDALE (1955)	2616.113	USC+GS MON @ SE COR AVE P + SIERRA HWY 375FT S C/L + 39FT W OF W RAIL CF SPRR	SL 338
PALMDALE (1955)	2613.451	USC+GS MON @ NE COR AVE P + SIERRA HWY 225FT N C/L + 39FT W OF W RAIL SPRR	SL 339
PALMDALE (1955)	2635.261	L+T W EDGE OF CONC PORCH OF HSE FACING PICTORIAL ST ON N/S OF ST 150FT S AVE P + 450FT E DIVISION ST PROPOSED	SL 340
PALMDALE (1955)	2634.266	L+BN 1.5FT W OF BCR @ SW COR OF CAROLSIDE AVE + PICTORIAL ST 210FT S + 450FT E OF DIVISION ST PROPOSED + AVE P	SL 341
PALMDALE (1955)	2658.748	RD BR CAP MON IN WELL 12IN DN 130FT N C/L AVE P + 0.6 MI W OF DIVISION ST 5FT S O PP NO 3353	SL 343
PALMDALE (1955)	2663.549	SPK + T IN TP NC 3355 J2A42 71FT S C/L AVE P 5/8 MILE W OF DIVISION ST PROP	SL 344
PALMDALE (1955)	2666.892	CS MON IN WELL 20IN DN @ INT OF AVE P + 10TH ST W	SL 345
PALMDALE (1955)	2686.721	RDBM TAG IN N CB BEACHDALE DR 18FT N C/L + 130FT W OF C/L OF 10TH ST W	SL 347
PALMDALE (1955)	2686.673	RDBM TAG 1FT W OF BCR @ SW COR OF BEACHDALE DR + 10TH ST W 18FT S + 72FT W OF C/L INT	SL 348
PALMDALE (1955)	2695.983	LRGE SPK IN PP NO 759354E W SIDE OF 10TH ST W SW COR OF YUCCA TREE + 10TH ST W	SL 349
PALMDALE (1955)	2695.029	L+T IN CONC CLEANOUT BX TO 30IN CIP IN FRONT OF HSE NO 39011 10TH ST W 252FT S OF C/L INT OF YUCCA TREE ST + 10TH ST W	SL 350
PALMDALE (1955)	2615.255	USC+GS BR CAP MON IN CONC 1.4 MI N ALONG SPRY FROM STA @ PALMDALE 63FT E OF THE C/L CAL HWY 14 57FT N OF TP 45FT NE OF A LONE TREE @ EDGE OF HWY 31FT W OF W RAIL	SL 351
PALMDALE (1955)	2635.283	RDBM TAG IN CONC FTG FOR CONC FOUNDATION @ NW COR OF AVE R + 47TH ST E 30FT N + 64FT W C/L INT	SL 352

QUAD-YEAR	ELEV	DESCRIPTION (INCLUDE QUAD AND YEAR IN DESCRIPTION)	BM NUMBER
PALMDALE (1955)	2635.276	L+BN IN E END OF CONC SLAB @ GATE ENTRANCE ON N SIDE OF AVE R 30FT N C/L + 225FT W C/L OF 47TH ST E	SL 353
PALMDALE (1955)	2658.534	SPK + T ON N SIDE OF PP NO 646007E NR PROP C/L OF AVE R-8 1 MI S OF PALMDALE BLVD + 75FT E C/L 47TH ST E	SL 354
PALMDALE (1955)	2658.387	L+T IN END OF LOWER CONC STEP TO HSE NR C/L INT OF AVE R-8 PROP + 47TH ST E 1 MI S OF PALMDALE BLVD + 75FT E C/L 47TH ST E	SL 355
PALMDALE (1955)	2669.301	L+T NR N EDGE CONC DRWY TO GARAGE 99FT E C/L 47TH ST E + 160FT N C/L AVE R-12 14FT E OF CB (SERVICE RD)	SL 356
PALMDALE (1955)	2669.586	RDBM TAG 1FT S OF BCR 40FT E C/L 47TH ST E + 56FT S C/L AVE R-12	SL 357
PALMDALE (1955)	2676.006	L+T N END OF CONC SLAB IN FRONT OF BLDG NO 37215 47TH ST E (STATE HWY NO 138) 110FT W C/L STATE HWY + 210FT N C/L OF AVE S	SL 358
PALMDALE (1955)	2692.540	L+T N END OF 1ST STEP OF HSE NO 37024 47TH ST E (STATE HWY NO 138) 0.3 MI S OF AVE S + 275FT S OF BC CURVE TO THE E 100FT E OF C/L 47TH ST E	SL 359
PALMDALE (1955)	2694.289	L+T IN S EDGE OF CONC APRON OF BARN 150FT S OF HSE NO 37024 47TH ST E (STATE HWY 138) 0.3 MI S OF AVE S 425FT S OF BC OF CURVE TO THE E + 105FT E C/L 47TH ST E	SL 360
PALMDALE (1955)	2699.626	L+T NE COR OF CONC SLAB OVER CISTERN 55FT W C/L 47TH ST E 75FT S OF HSE NO 36847 47TH ST E 300FT N AVE S-8	SL 361
PALMDALE (1955)	2702.973	S+T S SIDE TP NO 527120-H 20FT E C/L 47TH ST E + 45FT N C/L AVE S-8 TO THE E	SL 362
PALMDALE (1955)	2764.875	L+T IN HDWL 43FT S + 43FT W C/L INT 47TH ST E + PEARBLOSSOM HWY	SL 363A
PALMDALE (1955)	2755.957	L+T W END OF 1ST CONC STEP OF PORCH OF HSE NO 4723 PEARBLOSSOM HWY 25CFT E OF 47TH ST E + 175FT N C/L PEARBLOSSOM HWY	SL 364
PALMDALE (1955)	2760.196	L+T S END OF 1ST CONC STEP TO PORCH OF HSE NO 5004 PEARBLOSSOM HWY 50FT E C/L 50TH ST E + 90FT S C/L PEARBLOSSOM HWY	SL 366
PALMDALE (1955)	2753.630	L+T N END OF 1ST CONC STEP TO PORCH OF HSE NO 5160 PEARBLOSSOM HWY 50FT S C/L PEARBLOSSOM HWY 45FT W C/L 52ND ST E PRCD	SL 368
PALMDALE (1955)	2754.011	L+T 3FT E OF W END OF GAS STA ISLAND 1FT N OF S EDGE OF ISL 60FT N C/L OF PEARBLOSSOM HWY 250FT W OF C/L INT STATE HWY 138 + PEARBLOSSOM HWY	SL 369
PALMDALE (1955)	2756.913	L+T NR CTR OF GAS STA ISL 90FT S C/L PEARBLOSSOM HWY 90FT SW OF C/L OF STATE HWY NO 138 (TEXACO STA)	SL 370
PALMDALE (1955)	2774.449	L+T NR SLY END OF CONC SLAB TO BLDG NO 5810 PEARBLOSSOM HWY (STATE HWY 138) 0.5 MI S OF AVE T + 80FT W OF C/L PEARBLOSSOM HWY	SL 371
PALMDALE (1955)	2775.706	L+T NR CTR ON CONC SLAB TO BLDG NO 5828 PEARBLOSSOM HWY 0.5 MI S OF AVE T + 80FT W OF C/L PEARBLOSSOM HWY	SL 372

QUAD-YEAR	ELEV	D E S C R I P T I O N (INCLUDE QUAD AND YEAR IN DESCRIPTION)	BM	NUMBER
PALMDALE (1955)	2811.801	RD BR CAP MON IN WELL ON E SIDE OF STATE HWY NO 138 45FT E OF C/L + 4MI S OF PALMDALE BLVD 5FT S OF TP NO 647301H + 400FT N OF BLDG NO 6630 PEARBLOSSOM HWY	SL	373
PALMDALE (1955)	2817.158	L+T IN THE SW COR OF CONC SLAB TO BLDG NO 6630 PEARBLOSSOM HWY (STATE HWY 138) 345FT N OF CURVE TO NW 4 MI S OF PALMDALE BLVD 60FT W OF C/L HWY 138	SL	374
PALMDALE (1955)	2860.102	S+T W SIDE PP NC 531280-E 21FT S OF C/L OF PEARBLOSSOM HWY 300FT W OF CURVE TO THE E ENTERING TOWN OF LITTLE ROCK	SL	375
PALMDALE (1955)	2860.523	RD BR CAP MON 46FT E C/L PEARBLOSSOM HWY 5FT S OF TP NO 647299-H 75FT N OF BC OF CURVE TO EAST ENTERING TOWN OF LITTLE ROCK	SL	376
PALMDALE (1955)	2885.616	RDBM TAG N END OF W ABUT OF BRIDGE NO 53-303 OVER LITTLE ROCK CREEK 15FT N OF C/L OF PEARBLOSSOM HWY + FIRST BRIDGE W OF LITTLE ROCK	SL	377
PALMDALE (1955)	2885.999	RDBM TAG S END OF E ABUT OF BRIDGE NO 53-303 OVER LITTLE ROCK CREEK 15FT S OF C/L PEARBLOSSOM HWY + FIRST BRIDGE W OF LITTLE ROCK	SL	378
PALMDALE (1955)	2893.425	L+T @ SE COR CONC WK IN FRONT OF BLDG NO 7259 PEARBLOSSOM HWY 60FT N C/L 0.3 MI E OF BRIDGE NO 53-303 OVER LITTLE ROCK CREEK	SL	379
PALMDALE (1955)	2896.241	L+T @ SW COR CONC WK IN FRONT OF BLDG NO 7313 PEARBLOSSOM HWY 60FT N C/L + 0.4 MI E OF BRIDGE NO 53-303 OVER LITTLE ROCK CREEK	SL	380
PALMDALE (1955)	2910.178	USC+GS BR CAP MON @ SE COR PEARBLOSSOM HWY + 77TH ST E 30FT E + 27FT S C/L INT MKD (USGS 2910)	SL	381
BASELINE (1955)	2491.041	CS MON IN WELL 14IN DN @ C/L INT AVE M + 50TH ST W (USE N EDGE)	SL	394
BASELINE (1955)	2496.373	CS MON IN WELL 15IN DN @ C/L INT OF AVE M + 55TH ST W MKD (1/4 COR SEC 35, 2 R-13W T-7N T-6N) USE S EDGE	SL	395
BASELINE (1955)	2500.603	L+T IN CONC WLK TO HSE SW COR AVE M + 55TH ST W 57FT S + 34FT W C/L INT	SL	396
BASELINE (1955)	2513.654	CS MON IN WELL 22IN DN @ C/L INT OF AVE M + 60TH ST W	SL	397
PALMDALE (1955)	2522.886	L+T IN CONC PORCH TO HSE ON 60TH ST W 175FT E + 266FT S C/L INT AVE M + 60TH ST W	SL	398
PALMDALE (1955)	2603.469	RDBM TAG ON E SIDE OF CONC COLLAR AROUND 36IN STAND PIPE 240FT N C/L AVE M-8 + 36FT E C/L 60TH ST W	SL	400
PALMDALE (1955)	2613.757	CS MON IN WELL 12IN DN @ C/L INT 60TH ST W + AVE M-8 MKD (1/4 COR SEC 2 SEC 3 T6N R13W)	SL	401
PALMDALE (1955)	2723.967	RDBM TAG IN SE COR OF CONC FOUNDATION OF PUMP HSE 51FT E C/L 60TH ST W + 260FT N C/L OF AVE N	SL	402
PALMDALE (1955)	2730.576	RD MON IN CONC IN WELL W/COVER @ NE COR OF AVE N + 60TH ST W 90FT N + 13FT E OF C/L INT	SL	403
PALMDALE (1955)	2686.182	RD MON IN WELL W/COVER @ NW COR OF AVE N + 55TH ST W 8FT N + 101FT W OF C/L INT	SL	404

QUAD-YEAR	ELEV	DESCRIPTION (INCLUDE QUAD AND YEAR IN DESCRIPTION)	BM NUMBER
PALMDALE (1955)	2637.609	CS MON IN WELL 24IN DN @ C/L INT OF AVE N + 50TH ST W (USE NE EDGE)	SL 405
PALMDALE (1955)	2639.999	USGS MON 4IN UP 30FT N C/L AVE N + 45FT E C/L 50TH ST W	SL 406
PALMDALE (1955)	2556.208	CS MON IN WELL 10IN DN @ C/L INT OF 50TH ST W + AVE M-8 (USE NW EDGE)	SL 407
PALMDALE (1955)	2555.657	RDBM TAG IN CONC SLAB IN FRONT OF STORE @ NW COR OF 50TH ST W + AVE M-8 45FT N + 40FT W C/L INT	SL 408
PALMDALE (1955)	2515.696	RDBM TAG S CB TO SCHOOL 5FT NE OF END OF CB 50FT N + 43FT E OF C/L INT OF 50TH ST W + AVE M-4	SL 409
PALMDALE (1955)	2505.305	L+T IN MC IN E CB OF DRWY TO QUARTZ HILL SCHOOL 100FT E + 593FT N C/L INT 50TH ST W + AVE M-4	SL 410
PALMDALE (1955)	3226.333	US+GS BR CAP IN 6IN SQ CONC POST FLUSH LOC 720 FT NELY ALG SIERRA HWY FROM OLD INT ANGELES FOR- EST HWY @ VINCENT + 35FT NWLY FROM C/L MKD (S- 431 1935)	SL 441
PALMDALE (1955)	3133.446	BR DISK IN CONC 2IN UP 1.0 MI N ANGELES FOREST HWY 30FT W OF W EDGE N CONC HDWL OF CULVERT NO E701+90 35FT NW OF C/L HWY 14 MKD (K431 1935)	SL 443
PALMDALE (1955)	2973.157	BR DISK IN CONC 12IN UP 43FT SE CTR ONE-WAY ROAD OFF-RAMP HWY 14 TO PEARBLOSSOM HWY + 80FT E OF E EDGE S HDWL OF CULVERT NO E43+60 UNDER ONE-WAY ROAD MKD (LCFT 1938)	SL 444
PALMDALE (1955)	2967.912	BR DISK IN CONC 2IN UP IN TRIANGLE FORMED BY PEARBLOSSOM HWY + HWY14 32FT N OF CTR ONE-WAY ROAD OFFRAMP HWY14 TO PEARBLOSSOM HWY + 155FT W OF INT PAVT @ E END OF TRIANGLE 4FT E OF PP NO NUM MKD (U899 1955)	SL 445
PALMDALE (1955)	2911.002	BR DISK IN CONC FLUSH 130FT SE OF S EDGE OF E CONC HDWL FOR CULVERT NO E768+00 85FT E OF C/L HWY 14+ 0.25 MI N OF PEARBLOSSOM HWY CUTOFF MKD (M811 RESET 1955)	SL 446
PALMDALE (1955)	2907.845	BR DISK IN CONC 2IN UP 120FT N OF N EDGE E CONC HDWL FOR CULVERT NO E768+00 + 27FT E OF HWY 14 0.25 MI N OF PEARBLOSSOM HWY MKD (R430 1935)	SL 447
PALMDALE (1955)	2867.338	BR DISK IN CONC 3IN UP 71FT N OF N EDGE OF E HDWL FOR CULVERT NO 796-30 45FT E OF C/L HWY 14 + 95FT NE OF PP NO 618780H 0.35 MI S OF ALPINE SPRINGS RR XING MKD (E430 1935)	SL 448
PALMDALE (1955)	2862.589	BR DISK IN CONC 3IN UP 55FT SE OF C/L DIRT ROAD TO HSE NO 36065 N SIERRA HWY ALONG C/L PROD + 42FT E OF C/L HWY14 0.5 MI S OF AVE T + 0.25 MI S OF SPRR XING MKD (C430 1935)	SL 449
PALMDALE (1955)	2826.525	BR DISK IN CONC 4IN UP 39FT W OF C/L SPRR MAIN TRACKS + 165FT S OF COURSON RD (AVE T) MKD (P429 1935)	SL 450
PALMDALE (1955)	2831.393	BR DISK IN CONC 3IN UP 43 FT W OF C/L SPRR MAIN TRACKS + 125FT N OF COURSON RD (AVE T) MKD (M429 1935)	SL 451
PALMDALE (1955)	2800.689	BR DISK IN CONC 3IN UP 81FT NE OF C/L SPRR TRACKS 89FT SW OF C/L HWY 14+ 150 W OF EXIT TO LAKE ARESH-LAMAR (SMALL LAKE 0.5 MI S OF AVE S) MKD (U428 1935)	SL 452

QUAD-YEAR	ELEV	DESCRIPTION (INCLUDE QUAD AND YEAR IN DESCRIPTION)	BM NUMBER
PALMDALE (1955)	2802.615	BR DISK IN CONC HDWL FOR CULVERT UNDER SPRR TRACKS 10IN S OF N EDGE OF WL 21FT E OF C/L RR TRACKS 70FT W OF PALM IRRIG DIST DRAIN PUMP + 180FT W OF LAKE ARESH-LAMAR (SMALL LAKE 0.5 MI S OF AVE S) MKD (T487 1955)	SL 453
PALMDALE (1955)	2756.494	BR DISK IN CONC 6IN DN 88FT E OF SPRR MAINLINE + 31FT S OF AVE S 19FT W OF PP NO 515652H MKD (Z427 1935)	SL 454
PALMDALE (1955)	2753.054	BR DISK IN CONC FLUSH 90FT E OF C/L SPRR MAINLINE + 125FT N OF AVE S UNDER RR TELEGRAPH LINE MKD (Y427 1935)	SL 455
PALMDALE (1955)	2710.586	BR DISK IN CONC 3IN UP 43FT E + 80FT S OF RR SPK+T WITH PUNCH MARK @ C/L INT SPRR MAINLINE + AVE R8 29FT W OF C/L HWY 14 MKD (H 427 1935)	SL 456
PALMDALE (1955)	2705.059	BR DISK IN CONC 4IN UP 43FT E + 170FT N OF RR SPK+T WITH PUNCH MARK @ C/L INT SPRR MAINLINE + C/L AVE R8 27FT W OF C/L HWY 14 MKD (F811 1947)	SL 457
PALMDALE (1955)	2669.178	BR DISK IN TOP CONC POST 2IN UP 38FT E OF C/L SPRR MAINLINE + 96FT N OF C/L AVE R MKD (W426 1935)	SL 458
PALMDALE (1955)	2658.638	BR DISK IN CONC 3IN DN 100FT N + 25FT W OF NW COR OF PALMDALE SPRR STATION 10FT E OF C/L MAIN TRACK ACCESSIBLE FROM 8IN DIA HOLE FILLED WITH ROCK MKD (R811 1947)	SL 459
PALMDALE (1955)	2656.856	BR DISK IN CONC FLUSH 185FT N OF PALMDALE BLVD + 26FT E /F C/L SPRR MAINLINE MKD (X811 1947)	SL 460
PALMDALE (1955)	2622.120	BR DISK IN CONC FLUSH 76FT S OF HWY 14 RR XING 65FT E OF C/L 6TH ST E 40TH W OF C/L SPRR MAINLINE 0.4 MI N OF AVE Q MKD (C426 1935)	SL 461
PALMDALE (1955)	2617.366	BR DISK IN CONC FLUSH 115FT S + 44FT W OF SPK T+W @ C/L INT AVE P8 PROPOSED + SPRR MAIN TRACK 0.1 MI N OF HWY 14 RR XING MKD (B426 1935)	SL 462
PALMDALE (1955)	2607.909	BR DISK IN CONC 4IN UP 39FT W OF C/L SPRR TRACKS 67FT E OF C/L HWY 14+ 420FT S OF TP LINE LOCATED 0.5 MI N OF AVE P MKD (U425 1935)	SL 463
PALMDALE (1955)	2609.159	BR DISK IN CONC 4IN UP 64FT E OF HWY 14 40FT W/O C/L SPRR TRACKS + 435FT N OF TP LINE LOCATED 0.5 MI N OF AVE P MKD (T425 1935)	SL 464
PALMDALE (1955)	2604.584	BR DISK IN CONC 4IN UP 40FT W OF C/L SPRR TRACKS + 66FT E OF HWY 14 4000FT N OF AVE P MKD (S425 1935)	SL 465
PALMDALE (1955)	2606.068	BR TRI DISK IN CONC 6IN UP 62FT E OF C/L HWY 14 39FT W OF C/L SPRR TRACKS + 4250FT N OF AVE P MKD (SAHARA 1938)	SL 466
PALMDALE (1955)	2576.750	BR DISK IN CONC 2IN UP 59FT E OF C/L HWY 14 46FT W OF SPRR TRACKS 2000FT S OF AVE N 4FT N OF NEXT TO LAST POLE ON W SIDE OF TRACKS MKD (W811 1947)	SL 467
PALMDALE (1955)	2543.254	BR DISK IN CONC FLUSH 47FT W OF C/L SPRR TRACKS 83FT E OF HWY 14 2100FT S AVE M MKD (V811 1947)	SL 468
BASELINE (1955)	2527.868	BR DISK IN CONC 6IN UP 35FT S OF AVE M 87FT W OF CTR W TRAFFIC LANES HWY 14 3FT S OF PP NO 1055176E MKD (FF487 1955)	SL 469

QUAD-YEAR	ELEV	D E S C R I P T I O N (INCLUDE QUAD AND YEAR IN DESCRIPTION)	BM NUMBER
PALMDALE (1955)	2590.922	CS MON IN WELL 10IN DN @ C/L INT 10TH ST E + AVE P MKD (SEC COR 13-14-23-24 R12W T6N) USE NE EDGE	SL 502
PALMDALE (1955)	2592.313	RD MON IN WELL 10IN DN @ NE COR AVE P + 10TH ST E 200FT E + 30FT N C/L INT + 10FT E OF PP NO 1055339E	SL 503
PALMDALE (1955)	2580.844	CS MON IN WELL 6IN DN @ C/L INT 15TH ST E + AVE P MKD (1/4 COR 13-24 R12W T6N) USE SW EDGE	SL 504
PALMDALE (1955)	2580.165	RD MON IN WELL 6IN DN @ NE COR AVE P + 15TH ST W 200FT E + 30FT N C/L INT + 10FT W PP NC 1055328E USE N EDGE	SL 505
PALMDALE (1955)	2568.879	CHSL X IN W EDGE SMH 5FT S C/L AVE P + 2FT W C/L 20TH ST E	SL 506
PALMDALE (1955)	2568.318	RD MON IN WELL 8IN DN @ NE COR AVE P + 20TH ST E 50FT E + 30FT N C/L INT 10FT E PP NO 1055318E USE N EDGE	SL 507
PALMDALE (1955)	2557.827	CS MON IN WELL 12IN DN MKD 26FT E C/L INT AVE P + 25TH ST E MKD (1/4 SEC COR 18-19 R11W T6N) USE E EDGE	SL 508
PALMDALE (1955)	2551.147	CS MON 12IN DN @ C/L INT AVE P + 30TH ST E MKD (17-18-19-20 R11W T6N) USE N EDGE	SL 510
PALMDALE (1955)	2551.889	RD MON IN WELL 8IN DN @ NE COR AVE P + 30TH ST E 50FT E + 30FT N C/L INT + 10FT E PP NC 1055295E	SL 511
PALMDALE (1955)	2563.613	RDBM TAG IN CONC FTG OF COR FENCE POST OF THREE STRAND BARBED WIRE FENCE @ NE CCR AVE P-8 + 30TH ST E 81FT N + 30FT E C/L INT	SL 512
PALMDALE (1955)	2562.497	CS MON 24IN DN @ C/L INT 30TH ST E + AVE P-8 MKD (1/4 SEC COR 19-20 R11W T6N) NO WELL	SL 513
PALMDALE (1955)	2578.429	CS MON IN WELL 14IN DN @ C/L INT AVE Q + 30TH ST E MKD (19-20 29-30 R11W T6N) USE W EDGE	SL 514
PALMDALE (1955)	2580.347	L+BRAD 2FT S BCR @ SE CCR AVE Q + 30TH ST E 40FT E + 72FT S OF C/L INT	SL 515
PALMDALE (1955)	2550.721	CS MON 18IN DN @ C/L INT AVE P + 35TH ST E MKD (1/4 COR SEC 17-20 R11W T6N)	SL 516
PALMDALE (1955)	2552.351	RDBM MON IN WELL 6IN DN 40FT E C/L 35TH ST E + 20FT N C/L AVE P CN POLE LINE 10FT E PP NO 1055284E	SL 517
PALMDALE (1955)	2550.657	CS MON IN WELL 16IN DN @ C/L INT AVE P + 40TH ST E MKD (SEC COR 16-17-20-21 R11W T6N) USE N EDGE	SL 518
PALMDALE (1955)	2552.551	RDBM MON IN WELL 6IN DN 48FT E C/L 40TH ST E + 30FT N C/L AVE P ON POLE LINE 6FT E PP NO 1055272E	SL 519
PALMDALE (1955)	2556.075	CS MON 24IN DN @ C/L INT AVE P + 45TH ST E MKD (1/4 COR 16-21 R11W T6N)	SL 520
PALMDALE (1955)	2557.756	RD BM MON IN WELL 6IN DN 100FT E C/L 45TH ST E + 45FT S C/L AVE P	SL 521
PALMDALE (1955)	2560.393	RDBM MON IN WELL 6IN DN 100FT W C/L 50TH ST E + 4FT S C/L AVE P	SL 522

QUAD-YEAR	ELEV	DESCRIPTION (INCLUDE QUAD AND YEAR IN DESCRIPTION)	BM NUMBER
PALMDALE (1955)	2559.413	CS MON IN WELL 24IN DN @ C/L INT AVE P + 50TH ST E MKD (SEC COR 15-16-21-22 R11W T6N)	SL 523
PALMDALE (1955)	2578.940	CS MON IN WELL 14IN DN @ C/L INT 50TH ST E + AVE P-8 MKD (1/4 COR 21-22 R11W T6N)	SL 524
PALMDALE (1955)	2580.335	RDBM MON IN WELL 6IN DN 100FT S C/L AVE P8 + 4FT W C/L 50TH ST E	SL 525
PALMDALE (1955)	2596.944	RDBM MON IN WELL 6IN DN 100FT N C/L AVE Q + 4FT W C/L 50TH ST E	SL 526
PALMDALE (1955)	2597.138	CS MON IN WELL 12IN DN @ C/L INT 50TH ST E + AVE Q MKD (SEC COR 21-22-27-28 R11W T6N)	SL 527
PALMDALE (1955)	2569.860	CS MON IN WELL 6IN DN @ C/L INT 40TH ST E + AVE P8 MKD (1/4 COR 20-21 R11W T6N)	SL 528
PALMDALE (1955)	2570.866	RDBM MON IN WELL 6IN DN 150FT S C/L AVE P8 + 33FT E C/L 40TH ST E ON POLE LINE 5FT S PP NO 1241249E	SL 529
PALMDALE (1955)	2587.021	RDBM MON IN WELL 6IN DN 121FT E C/L 40TH ST E + 57FT N C/L AVE Q CN POLE LINE 6FT E PP NO 179025E	SL 530
PALMDALE (1955)	2587.049	CS MON 12IN DN @ C/L INT 40TH ST E + AVE Q MKD (SEC COR 20-21 28-29 R11W T6N)	SL 531
PALMDALE (1955)	2628.061	L+T CONC WLK ARCUND GAS STA ON NW COR PALMDALE BLVD + 15TH ST E 110FT N + 100FT W C/L INT	SL 643
PALMDALE (1955)	2623.045	CS MON IN WELL 6IN DN @ C/L INT 20TH ST E + AVE R (SEC COR) USE W EDGE	SL 645
PALMDALE (1955)	2623.167	L+BN N CB AVE R 2.3FT E BCR @ NE COR AVE R + 20TH ST E	SL 646
PALMDALE (1955)	2661.415	CS MON 12IN DN 0.5MI S AVE R + ON C/L 20TH ST E MKD (1/4 SEC COR 36-31 R11W R12W)	SL 648
PALMDALE (1955)	2716.954	2IN IP 10IN UP ON NE COR 20TH ST E + AVE S 50TH N + 50FT E C/L INT	SL 649
PALMDALE (1955)	2714.473	CS MON IN WELL 24IN DN ON C/L INT 20TH ST E + AVE S MKD (SEC COR 36-31-1 T6N R11W R12W)	SL 650
PALMDALE (1955)	2742.993	2IN IP 8IN UP 50FT S C/L AVE S + 50FT W C/L 10TH ST E USE N EDGE	SL 651
PALMDALE (1955)	2723.372	RD MON IN WELL 6IN DN 2415FT E 10TH ST E + 50FT N AVE S (2FT S OF 2IN X 3FT IP)	SL 653
PALMDALE (1955)	2735.539	2IN IP 4IN UP 50FT W 15TH ST E (PROP) + 50FT S AVE S USE E EDGE	SL 654
PALMDALE (1955)	2727.582	CS MON IN WELL 6IN DN ON C/L 15TH ST E (PROP) + AVE S MKD (1/4 COR 36 R12W)	SL 655
PALMDALE (1955)	2690.023	CS MON IN WELL 6IN DN ON C/L 25TH ST E (PROP) + AVE S MKD (1/4 COR 31 T6N T5N R11W)	SL 656
PALMDALE (1955)	2691.003	2IN IP 2IN UP 50FT E 25TH ST E (PROP) + 50FT S AVE S USE E EDGE	SL 657
PALMDALE (1955)	2668.792	CS MON IN WELL 15IN DN @ C/L INT AVE S + 30TH ST E MKD (SEC COR 31-32-6 T6N T5N R11W) USE W EDGE	SL 658

QUAD-YEAR	ELEV	DESCRIPTION (INCLUDE QUAD AND YEAR IN DESCRIPTION)	BM NUMBER
PALMDALE (1955)	2669.272	L+T CONC STEP TC HSE 140FT E C/L 30TH ST E + 98FT N C/L AVE S MKD (BM)	SL 659
PALMDALE (1955)	2675.341	RDBM TAG IN CONC FOUNDATION OF PUMP ON NW COR AVE S + 35TH ST E 118FT N + 48FT W C/L INT	SL 660
PALMDALE (1955)	2677.619	L+T CONC PORCH 135FT S C/L AVE S + 108FT E C/L 35TH ST E MKD (BM)	SL 661
PALMDALE (1955)	2672.330	L+T CONC PORCH CF HSE 86FT S C/L AVE S + 125FT W C/L 40TH ST E MKD (BM)	SL 662
PALMDALE (1955)	2671.017	L+T CONC PLATFORM OF GRAIN ELEVATOR 100FT E C/L 40TH ST E + 136FT S C/L AVE S MKD (BM)	SL 663
PALMDALE (1955)	2670.302	CS MON IN WELL 18IN DN @ C/L INT 45TH ST E + AVE S MKD (1/4 COR 33 T6N R11W) USE S EDGE	SL 664
PALMDALE (1955)	2677.215	L+T CONC FTG PUMP HSE NW COR 47TH ST E + AVE S 56FT N + 236FT W C/L INT MKD (BM)	SL 665
PALMDALE (1955)	2533.979	CS MON 25IN DN @ C/L INT AVE N + PROP 85TH ST E MKD (1/4 COR 6-7 R10W T6N)	SL 681
PALMDALE (1955)	2534.348	RDBM MON IN WELL 8IN DN ON NW COR AVE N + PROP 85TH ST E 100FT W + 50FT N C/L INT 2IN IP MARKER 2FT N	SL 682
PALMDALE (1955)	2528.766	CS MON 24IN DN @ C/L INT AVE N + 80TH ST E MKD (SEC COR 6-7-1-12 R10W T6N)	SL 683
PALMDALE (1955)	2531.329	RDBM MON IN WELL 8IN DN ON NW COR AVE N + 80TH ST E 100FT W + 50FT N C/L INT 2IN IP MARKER 2FT N	SL 684
PALMDALE (1955)	2528.468	L+T CONC ISL OF GAS PUMP 66FT S C/L AVE N + 170FT E C/L 76TH ST E MKD (BM)	SL 685
PALMDALE (1955)	2528.717	L+T CONC SLAB IN FRONT CF STORE NR BLDG 146FT S C/L AVE N + 170FT E C/L 76TH ST E MKD (BM)	SL 686
PALMDALE (1955)	2516.908	CS MON 20IN DN @ C/L INT AVE N + PROP 70TH ST E MKD (T6N SEC COR 1-2-11-12 R11W)	SL 687
PALMDALE (1955)	2517.478	RDBM MON IN WELL 8IN DN ON NW COR AVE N + PROP 70TH ST E 100FT W + 50FT N C/L INT 2IN WHITE IP MARKER 2FT N	SL 688
PALMDALE (1955)	2510.431	CS MON 24IN DN @ C/L INT AVE N + PROP 65TH ST E MKD (1/4 COR 2-11 T6N R11W)	SL 689
PALMDALE (1955)	2512.640	RDBM MON IN WELL 8IN DN ON NW COR AVE N + PROP 65TH ST E 100FT W + 50FT N C/L INT 2IN IP MARKER 2FT N 3FT UP	SL 690
PALMDALE (1955)	2507.015	CS MON IN WELL 24IN DN @ C/L INT AVE N + 60TH ST E MKD (SEC COR 2-3-10-11 T6N R11W)	SL 691
PALMDALE (1955)	2507.110	RDBM MON IN WELL 8IN DN ON NW COR AVE N + 60TH ST E 100FT W + 50FT N C/L INT 2IN IP MARKER 2FT N 3FT UP	SL 692
PALMDALE (1955)	2504.197	RDBM MON IN WELL 8IN DN ON NE COR AVE N + PROP 55TH ST E 100FT E + 50FT N C/L INT 2IN IP 2FT N 3FT UP	SL 693
PALMDALE (1955)	2503.169	CS MON IN WELL 24IN DN @ C/L INT AVE N + PROP 55TH ST E MKD (1/4 COR 3-10 T6N R11W)	SL 694

QUAD-YEAR	ELEV	DESCRIPTION (INCLUDE QUAD AND YEAR IN DESCRIPTION)	BM	NUMBER
PALMDALE (1955)	2501.902	L+T CONC WK TO HSE ON SE COR AVE N + 50TH ST E 150FT E + 84FT S C/L INT MKD (BM)	SL	695
PALMDALE (1955)	2499.644	CS MON IN WELL 8IN DN @ C/L INT AVE N + 50TH ST E MKD (SEC COR 3-4-9-10 T6N R11W)	SL	696
PALMDALE (1955)	2514.103	L+T CONC WK @ HSE ON NW COR 50TH ST E + AVE N-8 110FT N + 56FT W C/L INT MKD (BM)	SL	697
PALMDALE (1955)	2514.208	CS MON IN WELL 8IN DN @ C/L INT 50TH ST E + AVE N-8 MKD (1/4 CCR 9-10 T6N R11W)	SL	698
PALMDALE (1955)	2529.835	CS MON IN WELL 8IN DN @ C/L INT 50TH ST E + AVE O MKD (SEC COR 9-10-15-16 T6N R11W)	SL	699
PALMDALE (1955)	2531.117	RD MON IN WELL 8IN DN ON SW COR 50TH ST E + AVE O 100FT S + 50FT W C/L INT 2IN IP 2FT W 3FT UP	SL	700
PALMDALE (1955)	2543.295	CS MON IN WELL 8IN DN @ C/L INT 50TH ST E + AVE O-8 PROP MKD (1/4 CCR 15-16 T6N R11W)	SL	701
PALMDALE (1955)	2543.802	RD MON IN WELL 8IN DN ON SW COR 50TH ST E + AVE O-8 100FT S + 50FT W C/L INT 2IN IP MARKER 2FT W 3FT UP	SL	702
PALMDALE (1955)	3254.567	BEGINNING @ INT ANGELES FOREST HWY + SIERRA HWY THENCE 0.3 MI SELY ALONG ANGELES FOREST HWY TO MILE POST 23.5 THENCE 550FT SELY ALONG HWY TO CONC HDWL SET RDBM TAG IN WLY END 22FT SLY C/L	SL	732
PALMDALE (1955)	3266.683	BEGINNING @ INT SIERRA HWY + ANGELES FOREST HWY THENCE 0.8 MI SELY ALONG ANGELES FOREST HWY TO MILE POST 23 THENCE 1720FT NLY ALONG HWY TO CONC HDWL SET RDBM TAG IN SLY END 22FT ELY C/L	SL	733
PALMDALE (1955)	3265.660	BEGINNING @ INT SIERRA HWY + ANGELES FOREST HWY THENCE 0.8 MI SELY ALONG ANGELES FOREST HWY TO MILE POST 23, THENCE 1720 NLY ALONG HWY TO CONC HDWL SET RDBM TAG IN SLY END 20FT WLY C/L	SL	734
PALMDALE (1955)	3236.625	BEGINNING @ INT SIERRA HWY + ANGELES FOREST HWY THENCE SELY 1.3 MI ALONG ANGELES FOREST HWY TO MILE POST 22.5 THENCE 1380FT ELY ALONG HWY TO CONC HDWL SET RDBM TAG IN SLY END 27.5FT WLY C/L	SL	735
PALMDALE (1955)	3241.424	BEGINNING @ INT SIERRA HWY + ANGELES FOREST HWY THENCE SELY 1.3 MI ALONG ANGELES FOREST HWY TO MILE POST 22.5 THENCE 1380FT ELY ALONG HWY TO CONC HDWL SET RDBM TAG IN SLY END 22FT ELY C/L	SL	736
PALMDALE (1955)	3272.282	BEGINNING @ INT SIERRA HWY + ANGELES FOREST HWY THENCE 1.8 MI SELY ALONG ANGELES FOREST HWY TO MILE POST 22.0 THENCE BACK 390FT WLY ALONG HWY TO CONC HDWL SET RDBM TAG IN WLY END 25FT SLY C/L	SL	737
PALMDALE (1955)	3275.006	BEGINNING @ INT SIERRA HWY + ANGELES FOREST HWY THENCE 1.8 MI SELY ALONG ANGELES FOREST HWY TO MILE POST 22.0 THENCE BACK 390FT WLY ALONG HWY TO CONC HDWL SET RDBM TAG IN WLY END 25FT NLY C/L	SL	738
PALMDALE (1955)	3363.576	BEGINNING @ INT SIERRA HWY + ANGELES FOREST HWY THENCE SELY 2.3 MI ALONG ANGELES FOREST HWY TO MILE POST 21.5 THENCE NLY 375FT ALONG HWY TO CONC HDWL SET RDBM TAG IN NLY END 22FT WLY C/L	SL	739

QUAD-YEAR	ELEV	DESCRIPTION (INCLUDE QUAD AND YEAR IN DESCRIPTION)	BM NUMBER
PALMDALE (1955)	3374.775	BEGINNING @ INT SIERRA HWY + ANGELES FOREST HWY THENCE SELY 2.3 MI ALONG ANGELES FOREST HWY TO MILE POST 21.5 THENCE SLY 112FT ALONG HWY TO CONC FRAME AROUND PUMP OF WINDMILL 70FT ELY C/L SET L+RDBM TAG NR THE NW COR OF CONC FRAME	SL 740
PALMDALE (1955)	3465.453	BEGINNING @ INT SIERRA HWY + ANGELES FOREST HWY THENCE SELY 2.8 MI ALONG ANGELES FOREST HWY TO MILE POST 21.0 THENCE 660FT NLY ALONG HWY TO CONC HDWL SET RDBM TAG IN NLY END 33FT WLY C/L	SL 741
PALMDALE (1955)	3468.428	BEGINNING @ INT SIERRA HWY + ANGELES FOREST HWY THENCE SELY 2.8 MI ALONG ANGELES FOREST HWY TO MILE POST 21.0 THENCE 66CFT NLY ALONG HWY TO CONC RUBBLE HDWL SET RDBM TAG NR CTR 29FT ELY C/L	SL 742
PALMDALE (1955)	3566.462	BEGINNING @ INT SIERRA HWY + ANGELES FOREST HWY THENCE 3.3 MI SELY ALONG ANGELES FOREST HWY TO MILE POST 20.5 THENCE 485FT N ALONG HWY TO 12 X 12 WOOD POST OF BRIDGE NC B 793 WING WALL SET SPK + RD WASHER IN NW COR POST 25FT WLY C/L	SL 743
PALMDALE (1955)	3573.747	BEGINNING @ INT SIERRA HWY + ANGELES FOREST HWY THENCE 3.3 MI SELY ALONG ANGELES FOREST HWY TO MILE POST 20.5 THENCE 485FT NLY ALONG HWY TO LA DWP TOWER NO 203111 S SET RDBM TAG IN SW CONC FTG 133FT ELY C/L	SL 744
PALMDALE (1955)	3680.627	BEGINNING @ INT SIERRA HWY + ANGELES FOREST HWY THENCE SELY 3.8 MI ALONG ANGELES FOREST HWY TO MILE POST 20.0 THENCE 1275FT WLY ALONG HWY TO CS MON 3IN UP 42FT NLY C/L 2IN IP WITNESS PIPE 5FT FROM COR MKD (PROP LINE MON 12)	SL 745
PALMDALE (1955)	3683.371	BEGINNING @ INT SIERRA HWY + ANGELES FOREST HWY THENCE SELY 3.8 MI ALONG ANGELES FOREST HWY TO MILE POST 20.0 THENCE 120CFT WLY ALONG HWY TO CS MON 3IN UP 39FT SLY C/L 2IN IP WITNESS PIPE 5FT SLY MKD (PROP LINE MON 11)	SL 746
PALMDALE (1955)	3056.149	BEGINNING @ INT 82ND ST E + AVE V THENCE 0.3 MI SLY ALONG 82ND ST E TO LA DWP SERV RD THENCE WLY 3.2 MI ALONG SERV RD TO TOWER NO 225-2 L+T IN NLY CONC FTG OF TOWER STAMPED (BM Q) IN LEG 5IN ABOVE L+T	SL 747
PALMDALE (1955)	3034.532	BEGINNING @ INT 82ND ST E + AVE V THENCE 0.3 MI SLY ALONG 82ND ST E TO LA DWP SERV RD THENCE WLY 3.1 MI ALONG SERV RD TO TOWER NO 225-1 L+T IN NLY CONC FTG. STAMPED (BM P) IN TOWER LEG 5IN ABOVE L+T	SL 748
PALMDALE (1955)	3031.689	BEGINNING @ INT 82ND ST E + AVE V THENCE 0.3 MI SLY ALONG 82ND ST E TO LA DWP SERV RD THENCE WLY 2.9 MI ALONG SERV RD TO TOWER NO 224-6 L+T IN NLY CONC FTG OF TOWER STAMPED (BM O) IN LEG OF TOWER 5IN ABOVE L+T	SL 749
PALMDALE (1955)	3112.669	BEGINNING @ INT 82ND ST E + AVE V THENCE 0.3 MI SLY ALONG 82ND ST E TO LA DWP SERV RD THENCE WLY 2.7 MI ALONG SERV RD TO TOWER NO 224-5 L+T SLY CONC FTG OF TOWER STAMPED (BM N) IN LEG OF TOWER 5IN ABOVE L+T	SL 750
PALMDALE (1955)	3158.043	BEGINNING @ INT 82ND ST E + AVE V THENCE 0.3 MI SLY ALONG 82ND ST E TO LA DWP SERV RD THENCE WLY 2.6 MI ALONG SERV RD TO TOWER NO 224-4 L+T IN NLY CONC FTG OF TOWER STAMPED (BM M) 5IN ABOVE L+T ON LEG OF TOWER	SL 751

QUAD-YEAR	ELEV	DESCRIPTION (INCLUDE QUAD AND YEAR IN DESCRIPTION)	BM NUMBER
PALMDALE (1955)	3167.900	BEGINNING @ INT 82ND ST E + AVE V THENCE 0.3 MI SLY ALONG 82ND ST E TO LA DWP SERV RD THENCE WLY ALONG SERV RD 2.4 MI TO TOWER NO 224-3 L+T IN SLY CONC FTG OF TOWER STAMPED (BM L) ON LEG 5IN ABOVE L+T	SL 752
PALMDALE (1955)	3132.320	BEGINNING @ INT 82ND ST E + AVE V THENCE 0.3 MI SLY ALONG 82ND ST E TO LA DWP SERV RD THENCE WLY ALONG SERV RD 2.1 MI TO TOWER NO 224-2 L+T IN SLY CONC FTG OF TOWER STAMPED (BM K) ON LEG 4IN ABOVE L+T	SL 753
PALMDALE (1955)	3066.607	BEGINNING @ INT 82ND ST E + AVE V THENCE 0.3 MI SLY ALONG 82ND ST E TO LA DWP SERV RD THENCE WLY 2 MI ALONG SERV RD TO TOWER NO 224-1 L+T IN NLY CONC FTG OF TOWER STAMPED (BM J) ON LEG 4IN ABOVE L+T	SL 754
PALMDALE (1955)	3086.950	BEGINNING @ INT 82ND ST E + AVE V THENCE 0.3 MI SLY ALONG 82ND ST E TO LA DWP SERV RD THENCE WLY ALONG SERV RD TO TOWER NO 223-5 L+T NLY CONC FTG OF TOWER STAMPED (BM I) ON TOWER LEG 5IN ABOVE L+T	SL 755
PALMDALE (1955)	3056.158	BEGINNING @ INT 82ND ST E + AVE V THENCE 0.3 MI SLY ALONG 82ND ST E TO LA DWP SERV RD THENCE WLY 1.4 MI ALONG SERV RD TO TOWER NO 223-4 L+T SLY CONC FTG OF TOWER STAMPED (BM H) 5IN ABOVE L+T ON TOWER LEG	SL 756
PALMDALE (1955)	3066.368	BEGINNING @ INT 82ND ST E + AVE V THENCE 0.3 MI SLY ALONG 82ND ST E TO LA DWP SERV RD THENCE WLY ALONG SERV RD 1.3 MI TO TOWER NO 223-3 L+T IN SLY FTG OF TOWER STAMPED (BM G) IN LEG OF TOWER 5IN ABOVE L+T	SL 757
PALMDALE (1955)	3133.747	BEGINNING @ INT 82ND ST E + AVE V THENCE 0.3 MI SLY TO LA DWP SERV RD THENCE WLY ALONG SERV RD 1.0 MI TO TOWER NO 223-2 L+T IN SLY CONC FTG OF TOWER STAMPED (BM F) ON LEG OF TOWER 5IN ABOVE L+T	SL 758
PALMDALE (1955)	3094.697	BEGINNING @ INT 82ND ST E + AVE V THENCE 0.5 MI SLY ALONG 82ND ST E TO LA DWP SERV RD THENCE WLY ALONG SERV RD 0.8 MI TO TOWER NO 223-1 RDBM TAG IN SLY CONC FTG OF TOWER STAMPED (BM E) ON SLY LEG OF TOWER 5IN ABOVE TAG	SL 759
PALMDALE (1955)	3028.247	BEGINNING @ INT 82ND ST E + AVE V THENCE 0.3 MI SLY ALONG 82ND ST E TO LA DWP SERV RD THENCE WLY ALONG SERV RD 3.55 MI TO TOWER NO 222-6 L+T IN SLY CONC FTG OF TOWER STAMPED (BM D) 4IN ABOVE L+T	SL 760
PALMDALE (1955)	3034.924	BEGINNING @ INT 82ND ST E + AVE V THENCE 0.3 MI SLY ALONG 82ND ST E TO LA DWP SERV RD THENCE WLY ALONG SERV RD 0.4 MI TO TOWER NO 222-5 L+T SLY CONC FTG OF TOWER STAMPED (BM C) ON SLY LEG OF TOWER 4IN ABOVE L+T	SL 761
PALMDALE (1955)	3060.610	BEGINNING @ INT 82ND ST E + AVE V THENCE 0.3 MI SLY ALONG 82ND ST E TO LA DWP SERV RD THENCE WLY ALONG SERV RD 0.2 MI TO TOWER NO 222-4 RDBM TAG IN SLY CONC FTG OF TOWER STAMPED (BM B) ON SLY LEG OF TOWER 4IN ABOVE TAG	SL 762
PALMDALE (1955)	3062.793	BEGINNING @ INT 82ND ST E + AVE V THENCE 0.3 MI SLY ALONG 82ND ST E TO LA DWP SERV RD THENCE WLY ALONG SERV RD 3CFT TO TOWER NO 222-3 L+T SLY CONC FTG OF TOWER STAMPED (BM A) ON SLY LEG OF TOWER 4IN ABOVE L+T	SL 763

QUAD-YEAR	ELEV	DESCRIPTION (INCLUDE QUAD AND YEAR IN DESCRIPTION)	BM NUMBER
PALMDALE (1955)	2886.288	CS BR CAP 1.5FT E E CB 82ND ST E ON NE COR PEARBLOSSOM HWY 106FT N + 24FT E C/L INT 5FT N TP NO 494851E MKD (BM 106-19 1958)	SL 764
PALMDALE (1955)	2889.258	RDBM TAG N CB PEARBLOSSOM HWY 48FT E BCR NE COR 82ND ST E 22FT N + 97FT E C/L INT	SL 765
PALMDALE (1955)	2943.404	RDBM MON IN WELL 8IN DN NE COR 82ND ST E + AVE V 107FT N + 50FT E C/L INT 2IN IP MARKER 2FT E 3FT UP	SL 766
PALMDALE (1955)	2944.652	CS MON 16IN DN @ C/L INT 82ND ST E + AVE V MKD (1/4 COR 13 24 T5N R11W)	SL 767
PALMDALE (1955)	3003.079	BEG @ C/L INT 82ND ST E + AVE V THENCE SELY ALONG PROP FT TEJON RD 0.5 MI TO PROP INT OF 87TH ST E RDBM MON IN WELL 8IN DN 100FT NWLY ALONG FT TEJON RD + 50FT SWLY PROP C/L 2IN IP MARKER 2FT S OF MON 3FT UP	SL 768
PALMDALE (1955)	3003.235	BEG @ C/L INT OF 82ND ST E + AVE V THENCE SELY ALONG PROP FT TEJON RD 0.5 MI TO PROP INT OF 87TH ST E RDBM TAG IN SW CONC FTG OF HI LINE TOWER NO 221-6 90FT NELY C/L PROP FT TEJON RD + 36FT SWLY C/L PROP 87TH ST E	SL 769
PALMDALE (1955)	3089.245	BEG @ INT 82ND ST E + AVE V THENCE 1 MI SELY ALONG PROP FT TEJON RD TO THE PROP INT /F 92ND ST E RDBM MCN IN WELL 8IN DN 100FT WLY + 50FT NLY OF SAID PROP C/L INT 2IN IP MARKER 2FT N OF MON 3FT UP	SL 770
PALMDALE (1955)	3097.750	BEG @ INT 82ND ST E + AVE V THENCE 1 MI SELY ALONG PROP FT TEJON RD TO THE PROP INT OF 92ND ST E RDBM MCN IN WELL 8IN DN 100FT ELY + 50FT SLY OF SAID PROP C/L INT 2FT IP MARKER 2FT S OF MON 3FT UP	SL 771
PALMDALE (1955)	3156.207	BEG @ C/L INT 82ND ST E + AVE V THENCE 1.5 MI SELY ALONG PROP FT TEJON RD TO PT OF INT OF OLD FT TEJON RD RDBM MON IN WELL 8IN DN 100FT NWLY OF SAID INT 2IN IP MARKER 2FT N OF MON 3FT UP	SL 772
PALMDALE (1955)	3158.828	BEG @ C/L INT 82ND ST E + AVE V THENCE 1.5 MI SELY ALONG PROP FT TEJON RD TO POINT OF INT OLD FT TEJON RD RDBM MCN IN WELL 8IN DN 100FT SELY + 50FT SLY OF SAID INT 2IN IP MARKER 2FT S 3FT UP	SL 773
PALMDALE (1955)	3197.816	BEG @ C/L INT 82ND ST E + AVE V THENCE 1.9 MI SELY ALONG PROP FT TEJON RD TO FUTURE INT 101ST ST E RDBM MCN IN WELL 8IN DN 100FT WLY + 50FT NLY SAID INT 2IN IP MARKER 2FT NLY 3FT UP	SL 774
PALMDALE (1955)	3202.175	BEG @ C/L INT 82ND ST E + AVE V THENCE 1.9 MI SELY ALONG PROP FT TEJON RD TO PROP INT OF 101ST ST E RDBM MCN IN WELL 8IN DN 105FT WLY + 50FT SLY SAID INT 2IN IP MARKER 2FT NLY 3FT UP	SL 775
PALMDALE (1955)	3265.484	RDBM MON IN WELL 8IN DN ON SW COR FT TEJON RD + 106TH ST E 100FT S + 50FT W C/L INT 2IN IP MARKER 2FT W 3FT UP	SL 776
PALMDALE (1955)	3262.923	CS MON IN WELL 30IN DN @ C/L INT FT TEJON RD + 106TH ST E MKD (S28-1/4 S29 1915)	SL 777
PALMDALE (1955)	3164.548	CS MON IN WELL 30IN DN @ C/L INT 106TH ST E + PROP AVE W MKD (SEC COR 20-21 28-29 R10W T5N)	SL 778

QUAD-YEAR	ELEV	DESCRIPTION (INCLUDE QUAD AND YEAR IN DESCRIPTION)	BM NUMBER
PALMDALE (1955)	3168.393	RDBM MON IN WELL 8IN DN ON NE COR 106TH ST E + PROP AVE W 100FT N + 50FT E C/L INT 2IN IP MARKER 2FT E 3FT UP	SL 779
PALMDALE (1955)	3115.940	RDBM MON IN WELL 8IN DN SW COR 106TH ST E + AVE V-8 90FT S + 50FT W C/L INT 2IN IP MARKER 2FT W 3FT UP	SL 780
PALMDALE (1955)	3114.564	CS MON 1-1/2IN IP WITH CUT SPK IN WELL 8IN DN @ C/L INT 106TH ST E + AVE V-8	SL 781
PALMDALE (1955)	3045.900	L+T IN SLY CONC FTG OF LA DEPT W+P TOWER NO H220-1 ON SW COR 106TH ST E + AVE V 190FT S + 56FT W C/L INT MKD (BM)	SL 782
PALMDALE (1955)	3039.388	CS MON IN WELL 18IN DN @ C/L INT 106TH ST E + AVE V MKD (16-17-20-21 T5N R10W)	SL 783
PALMDALE (1955)	2963.768	USC+GS BR DISC 10IN UP ON SW COR 106TH ST E + PEARBLOSSOM HWY 61FT S + 42.5FT W C/L INT MKD (LS 23 1929)	SL 784
PALMDALE (1955)	3323.450	BEG @ INT OF 106TH ST E + C/L FT TEJON RD (TO THE E) THENCE 0.6 MI SELY ALONG FT TEJON RD RDBM MON IN WELL 8IN DN 30FT SLY APPROX C/L DIRT ROAD 5FT WLY OF TP NO 713701 H 2IN IP MARKER 2FT S 3FT UP	SL 786
PALMDALE (1955)	3332.704	BEG @ INT OF 106TH ST E + C/L FT TEJON RD TO THE E THENCE 0.1 MI SELY ALONG FT TEJON RD RDBM MON IN WELL 8IN DN 36FT SLY APPROX C/L DIRT RD 5FT WLY OF TP NC 713100 H 2IN IP MARKER 2FT S 3FT UP	SL 787
PALMDALE (1955)	3391.772	BEG @ INT OF 106TH ST E + C/L FT TEJON RD TO THE E THENCE 1.1 MI SELY ALONG FT TEJON RD RDBM MON IN WELL 6IN DN 50FT SLY APPROX C/L DIRT RD 5FT WLY OF TP NC 713694 H2IN IP MARKER 2FT S 3FT UP	SL 788
PALMDALE (1955)	3402.607	BEG @ INT OF 106TH ST E + C/L FT TEJON RD TO THE E THENCE 1.2 MI SELY ALONG FT TEJON RD RDBM MON IN WELL 8 IN DN 40FT SLY APPROX C/L DIRT RD 5FT WLY OF TP NC 713693 H 2IN IP MARKER 2FT S 3FT UP	SL 789
PALMDALE (1955)	3473.086	RDBM MON IN WELL 8IN DN @ SW COR FT TEJON RD + 121ST ST E 25FT S + 60FT W C/L INT 5FT W TP NO 713686 H 2IN IP MARKER 2FT S 3FT UP	SL 790
PALMDALE (1955)	3476.497	RDBM MON IN WELL 8IN DN @ SW COR FT TEJON RD + 121ST ST E 100FT S + 27FT W C/L INT 5FT N PP NO 120143 E 2IN IP MARKER 2FT W 3FT UP	SL 791
PALMDALE (1955)	3518.482	RDBM MON IN WELL 8IN DN @ SW COR FT TEJON RD + 128TH ST E 36FT S + 200FT W C/L INT 5FT W TP NO 7136801-H 2IN IP MARKER 2FT S 3FT UP	SL 792
PALMDALE (1955)	3522.454	RD MON IN WELL 8IN DN @ SE COR FT TEJON RD + 128TH ST E 50FT S + 150FT E C/L INT 5FT E TP NO 713679-H 2IN IP MARKER 2FT S 3FT UP	SL 793
PALMDALE (1955)	3474.635	RD MON IN WELL 8IN DN @ NW COR FT TEJON RD + 131ST ST E 40FT N + 285FT W C/L INT 5FT W CO FD POLE NO 116-716 2IN IP MARKER 2FT N 3FT UP	SL 794
PALMDALE (1955)	3471.908	RD MON IN WELL 8IN DN @ NW COR FT TEJON RD + 131ST ST E 40FT N + 160FT W C/L INT 5FT W CO FD POLE NO 116-717 2IN IP MARKER 2FT N 3FT UP	SL 795

QUAD-YEAR	ELEV	DESCRIPTION (INCLUDE QUAD AND YEAR IN DESCRIPTION)	BM NUMBER
PALMDALE (1955)	354 ¹ .992	RD SPK + BM TAG IN N WINGWALL OF BRIDGE NO B-980 18FT W C/L 131ST ST E + 340FT N OF C/L INT FT TEJON RD TO THE E	SL 796
PALMDALE (1955)	3553.747	RDBM MON IN WELL 8IN DN @ SW COR 131ST ST E + FT TEJON RD TO THE E 63FT S + 41FT W C/L INT 5FT NW CO FD POL NO 116-738 2IN IP MARKER 2FT W 3FT UP	SL 797
PALMDALE (1955)	3712.648	BEG @ INT OF 131ST ST E + C/L FT TEJON RD TO THE E THENCE 0.5 MI SLY ALONG 131ST ST E + RDBM MON IN WELL 8IN DN 27FT W OF C/L 5FT S OF CO FD POLE NO 116-758 2IN IP MARKER 2FT W 3FT UP	SL 798
PALMDALE (1955)	3727.376	BEG @ INT OF 131ST ST E + C/L FT TEJON RD TO THE E THENCE 0.6 MI SLY ALONG 131ST ST E RDBM MON IN WELL 8IN DN 28FT WLY C/L 5FT S OF CO FD POLE NO 116-759 2IN IP MARKER 2FT W 3FT UP	SL 799
PALMDALE (1955)	3835.160	RD MON IN WELL 8IN DN SE COR 131ST ST E + PALLETT CREEK RD 36FT S + 160FT E C/L INT 2IN IP MARKER 2FT S 3FT UP	SL 800
PALMDALE (1955)	3838.794	RD MON IN WELL 8IN DN NR C/L PROD OF PALLETT CREEK RD 75FT W C/L OF 131ST ST E 2IN IP MARKER 2FT W 3FT UP	SL 801
PALMDALE (1955)	3862.462	BEG @ INT OF 131ST ST E + PALLETT CREEK RD THENCE SLY ALONG 131ST ST E 0.5 MI RD MON IN WELL 8IN DN 75FT ELY C/L 5FT N PP NO 698970E 2IN IP MARKER 2FT E 3FT UP	SL 802
PALMDALE (1955)	3870.658	BEG @ INT OF 131ST ST E + PALLETT CREEK RD THENCE SLY ALONG 131ST ST E 0.6 MI RD MON IN WELL 8IN DN 33FT WLY C/L 4FT W PP NO 698971-E 2IN IP MARKER 2FT W 3FT UP	SL 803
PALMDALE (1955)	3989.098	RD MON IN WELL 3IN DN @ NE COR 131ST ST E + TUMBLEWEED RD 125FT N + 50FT E C/L INT 2IN IP MARKER 2FT N 4FT UP	SL 804
PALMDALE (1955)	3999.130	RDBM MON IN WELL 8IN DN NR C/L PROD OF TUMBLEWEED RD 40FT W C/L 131ST ST E 2IN IP MARKER 2FT W 4FT UP	SL 805
BASELINE (1955)	2566.905	CS BRASS CAP BM 5IN UP TOP OF 12IN CONC POST AVE M 0.5 MI W 60TH ST W 31.5FT S OF C/L 1FT N OF WHITE WITNESS PCST MKD (BM 104-16 1958 RE 5869)	SL 904
BASELINE (1955)	2609.886	CS BR CAP BM 5IN UP TOP OF 12IN CONC POST @ AVE M + 70TH ST W 75.5 FT N + 44 FT W C/L INT 3.5FT N PP NO 1183862E MKD (BM 104-17 1858 RE 5869)	SL 905
PALMDALE (1955)	2969.449	CS MON IN TOP OF 12IN CONC POST 5IN UP AVE U-8 0.5 MI E OF 106TH ST E 23FT N C/L AVE U-8 174FT W OF W LINE OF HSE NO 11135 + 54FT W OF CULV MKD (BM 106-25 1958 RE 5869)	SL 943
PALMDALE (1955)	2940.562	CS MON IN TOP OF 12IN CONC POST 5IN UP AVE U-8 + 116TH ST E 34FT S C/L AVE U-8 30FT W C/L 116TH ST E MKD (BM 106-26 1958 RE 5869)	SL 944
PALMDALE (1955)	3019.772	USC+GS MON IN TOP OF 8IN CONC POST 10IN UP 116TH ST E 0.55 MI S AVE U-8 44FT W C/L 116TH ST E MKD (J-306 1935)	SL 945
PALMDALE (1955)	3065.543	CS MON IN TOP OF 12IN CONC POST 5IN UP PEARBLOSSOM HWY (ST HWY NO 138) + 116TH ST E 38FT N CTR OF PVMT PEARBLOSSOM HWY + 365FT E C/L 116TH ST E MKD (BM 106-28 1958 RE 5869)	SL 946

QUAD-YEAR	ELEV	DESCRIPTION (INCLUDE QUAD AND YEAR IN DESCRIPTION)	BM NUMBER
PALMDALE (1955)	3051.806	CS MON 9IN DN IN WELL W/COVER PEARBLOSSOM HWY + 121ST ST E @ C/L INT 2FT S CTR OF PVMT MKD (CS R10W T5N CTR SEC 22RE 63)	SL 947
PALMDALE (1955)	3047.451	CS MON 8IN DN IN WELL W/COVER PEARBLOSSOM HWY + 126TH ST @ C/L INT MKD (CS RE 63 T5N 1/4 COR 22, 23)	SL 948
PALMDALE (1955)	3052.697	CS MON IN TOP OF 12IN CONC POST 4IN UP PEARBLOSSOM HWY + 131ST ST E 48FT S C/L PEARBLOSSOM HWY 49FT E C/L 131ST ST E MKD (BM 106-31 1958 RE 5869)	SL 949
PALMDALE (1955)	3093.295	CS MON IN TOP OF 12IN CONC POST 5IN UP PEARBLOSSOM HWY 0.5 MI E OF 131ST ST E 45FT S C/L PEARBLOSSOM HWY MKD (BM 106-32 1958 RE 5869)	SL 950
PALMDALE (1955)	3128.307	CS MON IN TOP OF 12IN CONC POST 4IN UP PEARBLOSSOM HWY 1 MI E OF 131ST ST E 45FT S C/L PEARBLOSSOM HWY MKD (BM 106-33 1958 RE 5869)	SL 951
PALMDALE (1955)	3161.538	USC+GS MON IN TOP OF 8IN CONC POST 5IN UP PEARBLOSSOM HWY 1.9 MI E 131ST ST E + 34.5FT S C/L PEARBLOSSOM HWY MKD (K-306 1935)	SL 952
PALMDALE (1955)	3162.292	CS MON IN TOP OF 12IN CONC POST PEARBLOSSOM HWY 1 MI W OF 165TH ST E 45FT S C/L MKD (BM 106-35 1958 RE 5869)	SL 953
PALMDALE (1955)	3164.262	BOAT SPK IN LEAD TOP OF SE WINGWALL OF CONC BRIDGE NO 53-314 (1948) PEARBLOSSOM HWY 0.65 MI W OF 165TH ST E 18FT S C/L	SL 954
PALMDALE (1955)	3168.796	USC+GS MON IN TOP OF 6IN CONC POST 6IN UP PEARBLOSSOM HWY + 165TH ST E 40FT S C/L PEARBLOSSOM HWY 61FT E C/L 165TH ST E MKD (LS 21 1929)	SL 955
PALMDALE (1955)	3184.796	CS MON IN TOP OF 12IN CONC POST 5IN UP PEARBLOSSOM HWY 0.5 MI E OF 165TH ST E 0.5 MI W 175TH ST E 45FT N C/L PEARBLOSSOM HWY MKD (BM 106-38 1958 RE 5869)	SL 956
PALMDALE (1955)	3197.176	CS MON IN TOP OF 12IN CONC POST 4IN UP PEARBLOSSOM HWY + 175TH ST E 45FT N C/L PEARBLOSSOM HWY 80FT E C/L 175TH ST R MKD (BM 106-39 1958 RE 5869)	SL 957
PALMDALE (1955)	3278.960	USGS MON IN 12IN CONC POST 12IN UP AVE W + 175TH ST E 26FT N C/L AVE W 270FT W C/L 175TH ST E MKD (USGS LA CO LLANO RS 1929)	SL 958
PALMDALE (1955)	3284.052	CS MON IN TOP OF 12IN CONC POST 4IN UP PEARBLOSSOM HWY @ JUNC W/ AVE W 0.6MI E OF 175TH ST E 35FT S C/L PEARBLOSSOM HWY 119FT SW OF W END COR IRON CULV CONC HDWL @ HWY STA H 317+15 MKD (BM 106-41 1958 RE 5869)	SL 959
PALMDALE (1955)	3299.813	CS MON IN TOP OF 12IN CONC POST 4IN UP PEARBLOSSOM HWY 0.55 MI E OF CURVE @ JUNC PEARBLOSSOM HWY + AVE W 35FT N C/L PEARBLOSSOM HWY 150FT E OF CUL HWY STA H 1165+88 MKD (BM 106-42 1958 RE 5869)	SL 960
PALMDALE (1955)	3342.740	CS MON IN TOP OF 12IN CONC POST PEARBLOSSOM HWY 1.1 MI E OF CURVE @ JUNC PEARBLOSSOM HWY + AVE W 35FT N C/L MKD (BM 106-43 1958 RE 5869)	SL 961
PALMDALE (1955)	3382.318	CS MON IN 12IN CONC POST 5IN UP PEARBLOSSOM HWY 0.7 MI W 204TH ST E 35FT N C/L PEARBLOSSOM HWY MKD (BM 106-44 1958 RE 5869)	SL 962

QUAD-YEAR	ELEV	DESCRIPTION (INCLUDE QUAD AND YEAR IN DESCRIPTION)	BM NUMBER
PALMDALE (1955)	3408.467	USGS MON IN TOP OF 10X12 CONC POST 12IN UP PEARBLOSSOM HWY 0.2 MI W 204TH ST E 205FT W OF INT BLACK BUTTE BASIN RE 32FT S C/L PEARBLOSSOM HWY MKD (LARGO VISTA RS 1929)	SL 963
PALMDALE (1955)	3398.474	CS MON IN TOP OF 12IN CONC POST 5IN UP PEARBLOSSOM HWY (ST HWY NO 138) 0.55 MI E 204TH ST E 40FT N C/L PEARBLOSSOM HWY 196FT W OF CUL @ HWY STA H 1295+24 MKD (BM 106-46 1958 RE 5869)	SL 964
PALMDALE (1955)	3398.134	CS MON IN TOP OF 12IN CONC POST 5IN UP PEARBLOSSOM HWY 0.25 MI W OF JUNC PEARBLOSSOM HWY + ANTELOPE HWY 49FT W ROW CF PP RUNNING N CN W SIDE OF PRIV RD 40FT N C/L PEARBLOSSOM HWY MKD (BM 106-47 1958 RE 5869)	SL 965
PALMDALE (1955)	3405.040	USGS MON IN TOP OF CONC POST 3IN UP PEARBLOSSOM HWY 0.35 MI E OF ANTELOPE HWY 28FT S C/L PEARBLOSSOM HWY MKD (L-306 1935)	SL 966
PALMDALE (1955)	3402.889	CS MON 8IN DN IN WELL W/COVER C/L INT PEARBLOSSOM HWY + 223RD ST E 0.5 MI E ANTELOPE HWY MKD (CO ENG RE 5869 T5N R8W 20,21,28,29)	SL 967
PALMDALE (1955)	3400.873	CS MON IN TOP OF 12IN CONC POST 4IN UP PEARBLOSSOM HWY 1 MI E OF ANTELOPE HWY NR 1/4 COR SEC 21,28 T5N R8W 31FT S C/L PEARBLOSSOM HWY MKD (BM 106-50 1958 RE 5869)	SL 968
PALMDALE (1955)	3395.142	CS MON IN TOP OF 12IN CONC POST 4IN UP PEARBLOSSOM HWY NE COR SEC 28 T5N R8W 111FT S C/L PEARBLOSSOM HWY ON LINE W/ROW OF PP RUNNING NS ON W SIDE OF DIRT RD MKD (BM 106-51 1958 RE 5869)	SL 969
PALMDALE (1955)	3326.187	CS MON 5IN UP W SIDE OF DIRT RD 41FT NWLY 1/4 COR SEC 21,22 T5N R8W MKD (BM 106-52 1958 RE 5869)	SL 970
PALMDALE (1955)	3265.031	CS MON 12IN DN CN 233RD ST E (DIRT RD) 1MI N PEARBLOSSOM HWY MKD (CS RE 329 T5N R8W 15,16,21,22)	SL 971
PALMDALE (1955)	3209.109	CS MON 2IN UP 233RD ST E 1.5 MI N PEARBLOSSOM HWY MKD (CS RE 329 R8W T5N 15,16)	SL 972
PALMDALE (1955)	3162.371	CS MON 20IN DN 233RD ST E 2MI N PEARBLOSSOM HWY 73FT E OF A DRY WASH + 8CFT N OF A SIDE WASH MKD (CS RE 329 R8W T5N 9,10,15,16)	SL 973
PALMDALE (1955)	3152.316	USGS MON IN TOP OF 8IN CONC POST 6IN UP ON BLACK BUTTE BASIN RD 3.3 MI NE PEARBLOSSOM HWY 406FT W OF 1/4 COR SEC 9,16 T5N R8W 24FT NW C/L BLACK BUTTE BASIN RD MKD (LS 37 1929)	SL 974
PALMDALE (1955)	3133.784	L+T IN BASE OF S LEG DWP HIGHLINE TOWER NO 206 1115 1.3 MI S OF SE RIDGE OF BLACK BUTTE + 760FT S OF SL 976 1/4 COR SEC 9,10 T5N R8W	SL 975
PALMDALE (1955)	3120.620	CS MON 1.25 MI S OF SE RIDGE BLACK BUTTE + 760FT N OF SL 975 MKD (CS RE 329 R8W T5N 9,10)	SL 976
PALMDALE (1955)	3086.083	CS MON 6IN UP 0.7 MI S CF SE RIDGE BLACK BUTTE + 510FT W OF ROCK RUINS OF HSE ON BLACK BUTTE BASIN RD MKD (CS RE 329 R8W T5N 4,3,9,10,)	SL 977

QUAD-YEAR	ELEV	DESCRIPTION (INCLUDE QUAD AND YEAR IN DESCRIPTION)	BM NUMBER
PALMDALE (1955)	3048.235	CS MON 18IN DN 0.25MI S OF SE RIDGE OF BLACK BUTTE 30FT E OF 2IN IP 6IN UP MKD (CS RE 329 R8W T5N 1/4 COR 4,3)	SL 978
PALMDALE (1955)	3035.404	CSBM IN TOP OF 12IN CONC POST 6IN UP IN BLACK BUTTE @ BASE OF SE RIDGE 5FT E OF INPLACE ROCKS 143FT W OF CTR BLACK BUTTE BASIN RD + 50FT N OF EW DIRT RD MKD (BM 106-61 1958 RE 58 69)	SL 979
PALMDALE (1955)	3004.592	CSBM 18IN DN ON 235TH ST E 1.5MI S PALMDALE BLVD + 16FT E OF BARBED WIRE FENCE COR MKD (CO ENG RE 58 69 T5N T6N STD COR 1/4 COR SEC)	SL 980
PALMDALE (1955)	2978.148	CSBM IN TOP OF 12IN CONC POST 4IN UP 40FT E CTR 235TH ST E (DIRT RD) 36FT S CTR OF EW DIRT RD 1 MI S PALMDALE BLVD NR CTR SEC 34 T6N R8W 28FT W PP NO 682262E + 57FT NELY PP NO 682263E MKD (BM 106-63 1958 RE 58 69)	SL 981
PALMDALE (1955)	2946.582	CS MON IN WELL 18IN DN 21FT W CTR 235TH ST E 6FT S CTR OF EW DIRT RD + 0.5 MI S PALMDALE BLVD MKD (CS MON R8W T6N 1/4 COR 27,34 RE 2177)	SL 982
PALMDALE (1955)	2925.486	CSBM IN TOP OF 12IN CONC POST 6IN UP 33FT N C/L PALMDALE BLVD + 87FT E 235TH ST E (DIRT RD) 4FT SW PP NO 682071E MKD (BM 106-65 1958 RE 58 69)	SL 983
PALMDALE (1955)	2933.226	CSBM IN TOP OF 12IN CONC POST 4IN UP 73FT N C/L PALMDALE BLVD 33FT E CTR 240TH ST E + 33FT N PP NO 1000897E MKD (BM 106-66 1958 RE 58 69)	SL 984
PALMDALE (1955)	2911.729	CSBM IN TOP OF 12IN CONC POST 6IN UP 31FT E C/L 240TH ST E + AVE Q 88FT S OF FENCE COR MKD (BM 106-67 1958 RE 58 69)	SL 985
PALMDALE (1955)	2887.777	CSBM IN TOP OF 12IN CONC POST 6IN UP 31FT E C/L 240TH ST E + AVE P-8 (DIRT RD TC W) 0.5 MI S AVE P 5FT W PP NO 864351E MKD (BM 106-68 1958 RE 58 69)	SL 986
PALMDALE (1955)	2867.219	CSBM IN TOP OF 12IN CONC POST 2IN UP 36FT E C/L 240TH ST E + 189FT N C/L AVE P 6FT S PP NO 735807E MKD (BM 106-69 1958 RE 58 69)	SL 987
PALMDALE (1955)	2851.311	CSBM IN TOP OF 12IN CONC POST 6IN UP 35FT E C/L 240TH ST E 0.5 MI N OF AVE P 122FT N OF 1/4 COR SEC 14-15 T6N R8W + 13FT N PP NO 735802E 28FT W PP NO 1070431E MKD (BM 106-70 1958 RE 58 69)	SL 988
PALMDALE (1955)	2846.405	CSBM IN WELL 18IN DN @ 240TH ST E + AVE O ON NLY + ELY C/L PROD 49FT SWLY PP NO 734997E MKD CS MON R8W T6N 10,11,14,15	SL 989
PALMDALE (1955)	2823.464	1-1/2IN IP W/N IN CONC CTR 18IN DN 0.5 MI W 240TH ST E 35FT S PP NO 734991E + 30FT S ON SLY PROD OF FENCE CCR 1/4 COR SEC 10,15 T6N R8W)	SL 990
PALMDALE (1955)	2800.440	USGS IN TOP OF 6IN CONC POST FLUSH @ AVE O + 230TH ST E (DIRT RD) 32FT S SL 992 MKD (LS 34 1929)	SL 991
PALMDALE (1955)	2798.948	CSBM IN WELL 20IN DN @ C/L INT AVE O + 230TH ST E 36FT SE FENCE COR ON W SIDE 230TH ST E 36FT SW FENCE CCR ON E SIDE 230TH ST E 32FT N SL 991 MKD (CS MON R8W T6N SEC COR 9,10,15,16)	SL 992
PALMDALE (1955)	2783.674	1-1/2IN IP W/N IN CTR OF PIPE IN WELL ON C/L AVE O + 225TH ST E 231FT SW PP NO 734980E + 263FT E OF SLY PROD E SIDE HSE NO 2239E @ 1/4 COR SEC 9,16 T6N R8W)	SL 993

QUAD-YEAR	ELEV	DESCRIPTION (INCLUDE QUAD AND YEAR IN DESCRIPTION)	BM NUMBER
PALMDALE (1955)	2770. ²⁵⁰ 264	CSBM IN TOP OF 12IN CONC POST 4IN UP 35FT N C/L AVE O 42FT E NLY PROD 220TH ST E (DIRT RD) + 5FT E PP NO 734973E MKD (BM 106-76 1958 RE 58 69)	SL 994
PALMDALE (1955)	2756.375	CSBM IN TOP OF 12IN CONC POST 4IN UP 35FT N CTR OF AVE O + 110FT E 215TH ST E + 4FT E PP NO 734968E MKD (BM 106-77 1958 RE 5869)	SL 995
PALMDALE (1955)	2743.724	CSBM IN TOP OF 12IN CONC POST 6IN UP 36FT N CTR OF PVMT AVE O 0.5 MI W CF 215TH ST E + 4FT W PP NO 734963E MKD (BM 106-78 1959 RE 58 69)	SL 996
PALMDALE (1955)	2725.653	CSBM IN TOP OF 12IN CONC POST 4IN UP 37FT N C/L AVE O 19FT E CTR 205TH ST E + 6FT E PP NO 76697E MKD (BM 106-79 1959 RE 58 69)	SL 997
PALMDALE (1955)	2710.593	USGS MON IN TOP OF 6IN CONC POST 14IN UP 41FT N C/L AVE O 20FT W NLY PROD 200TH ST E + 202FT W OF SLY PROD W SIDE CF HSE NO 20111	SL 998
PALMDALE (1955)	2693.613	CSBM IN TOP OF 12IN CONC POST 4IN UP 32FT N C/L AVE O 62FT E CTR 195TH ST E MKD (BM 106-81 1959 RE 58 69)	SL 999
PALMDALE (1955)	2681.714	CSBM IN TOP OF 12IN CONC POST 4IN UP 37FT N CTR OF PVMT AVE O 1 MI E 180TH ST E MKD (BM 106-82 RE 58 69 1959)	SL 1000
PALMDALE (1955)	2668.076	CSBM IN TOP OF 12IN CONC POST 6IN UP 33FT N C/L AVE O 0.4 MI E 180TH ST E 24FT E PP NO 1185563E MKD (BM 106-83 1959 RE 58 69)	SL 1001
PALMDALE (1955)	2665.628	CSBM IN WELL 9IN DN @ CTR OF INT AVE O + 180TH ST E 44FT SE PP NO 767672E + 141FT SW PP NO 1185555E MKD (CS MON R9W T6N SEC COR 10,11,14, 15)	SL 1002
PALMDALE (1955)	2660.058	RDBM MON IN WELL W/COVER 40FT S C/L AVE O 100FT E C/L 175TH ST E (NOT IMPROVED) 2IN IP WITNESS 3FT UP 2FT S	SL 1003
PALMDALE (1955)	2660.390	CS MON IN WELL MKD (T6N R9W 1/4 SEC 10,15) @ C/L INT AVE O + 175TH ST E (NOT IMPROVED)	SL 1004
PALMDALE (1955)	2649.683	RDBM MON IN WELL W/COVER 40FT S C/L AVE O + 100FT E C/L 170TH ST E 2IN IP WITNESS 3FT UP 2FT S	SL 1005
PALMDALE (1955)	2649.898	CS MON MKD (T6N R9W SEC COR 9,10,15,16) IN WELL W/COVER @ C/L INT AVE O + 170TH ST E (PVMT TO N)	SL 1006
PALMDALE (1955)	2639.259	CS MON MKD (T6N R9W 1/4 SEC 9,16) IN WELL W/COVER @ C/L INT AVE O + 165TH ST E	SL 1007
PALMDALE (1955)	2638.986	RDBM MON IN WELL W/COVER 40FT S C/L AVE O + 120FT W C/L 165TH ST E (NOT IMPROVED) 2IN IP WITNESS 3FT UP 2FT S	SL 1008
PALMDALE (1955)	2649.876	CS MON MKD (T6N R9W SEC COR 8,9,17,16) IN WELL W/COVER @ C/L INT AVE O + 160TH ST E (PROP BUT NOT IMPROVED)	SL 1009
PALMDALE (1955)	2652.794	RDBM MON IN WELL W/COVER 40FT S C/L AVE O + 100FT W C/L 160TH ST (NCT IMPROVED) 2IN IP WITNESS 3FT UP 2FT S	SL 1010
PALMDALE (1955)	2665.865	CS MON MKD (T6N R9W 1/4 COR 8,17) IN WELL W/COVER @ C/L INT AVE O + 155TH ST E (PROP BUT NOT IMPROVED)	SL 1011

QUAD-YEAR	ELEV	D E S C R I P T I O N (INCLUDE QUAD AND YEAR IN DESCRIPTION)	BM NUMBER
PALMDALE (1955)	2665.651	RDBM MON IN WELL W/COVER 40FT S C/L AVE G + 120FT W C/L 155TH ST E (PROP) 2IN IP WITNESS 3FT UP 2FT S	SL 1012
PALMDALE (1955)	2647.814	CS MON MKD (T6N R9W 7,8,17,18) 12IN DN @ C/L 150TH ST E + AVE G PVMT INT MON 15FT S C/L INT + 4FT S OF S EDGE OF PVMT	SL 1013
PALMDALE (1955)	2649.479	RDBM MON IN WELL W/COVER 5FT N PP NO 799921E 38FT N C/L AVE C + 365FT W 150TH ST E 2IN IP WITNESS 3FT UP 2FT N	SL 1014
PALMDALE (1955)	2643.749	CS MON IN WELL W/COVER MKD (T6N R10W 1/4 SEC 29-30) @ C/L INT PALMDALE BLVD + 90TH ST E	SL 1015
PALMDALE (1955)	2652.128	CS MON IN WELL W/COVER MKD (T6N R10W CTR SEC 29) @ C/L INT PALMDALE BLVD + 95TH ST E (DIRT RD)	SL 1016
PALMDALE (1955)	2652.065	RDBM MON IN WELL W/COVER 35FT S C/L PALMDALE BLVD + 100FT E C/L 95TH ST E 2IN IP WITNESS 3FT UP 2FT S	SL 1017
PALMDALE (1955)	2665.443	CS MON IN WELL W/COVER MKD (T6N R10W 1/4 SEC 29-28) @ C/L INT PALMDALE BLVD + 100TH ST E (PAVED TO S)	SL 1018
PALMDALE (1955)	2668.367	L+T IN NE COR CONC STOOP @ HSE NO 10010 PALMDALE BLVD @ SE COR 100TH ST E 135FT S + 135FT E C/L INT	SL 1019
PALMDALE (1955)	2675.107	CS MON IN WELL W/COVER MKD (T6N R10W CTR SEC 28) @ C/L INT PALMDALE BLVD + 105TH ST E (DIRT RD)	SL 1020
PALMDALE (1955)	2677.532	RDBM MON IN WELL W/COVER 12FT SE TP NO 721977H 35FT S C/L PALMDALE BLVD + 280FT E C/L 105TH ST E (DIRT RD) 2IN IP WITNESS 3FT UP 2FT S	SL 1021
PALMDALE (1955)	2684.844	RDBM MON IN WELL W/COVER 7FT W PP NO 1219350E 35FT N C/L PALMDALE BLVD + 125FT W C/L 110TH ST E (DIRT RD) 2IN IP WITNESS 3FT UP 2FT N	SL 1022
PALMDALE (1955)	2865.709	CS MON IN WELL W/COVER MKD (T6N R10W 1/4 SEC 28,27) @ C/L INT PALMDALE BLVD + 110TH ST E	SL 1023
PALMDALE (1955)	2693.254	RDBM MON IN WELL W/COVER 6FT NE PP NO 1190412E 32FT N C/L PALMDALE BLVD + 195FT W C/L 115TH ST E (UNIMPROVED) 2IN IP WITNESS 3FT UP 2FT N	SL 1024
PALMDALE (1955)	2694.823	RDBM MON IN WELL W/COVER 6FT NE PP NO 1190414E 32FT N PALMDALE BLVD + 250FT E C/L 115TH ST E (UNIMPROVED) 2IN IP WITNESS 3FT UP 2FT N	SL 1025
PALMDALE (1955)	2704.953	RDBM MON IN WELL W/COVER 6FT E PP NO 1190424E 32FT N C/L PALMDALE BLVD + 90FT W 120TH ST E (UNIMPROVED) 2IN IP WITNESS 3FT UP 2FT N	SL 1026
PALMDALE (1955)	2706.418	CS MON 15IN DN MKD (T6N R10W 1/4 SEC 27-28) @ C/L INT PALMDALE BLVD + 120TH ST E (UNIMPROVED)	SL 1027
PALMDALE (1955)	2717.031	RDBM MON IN WELL W/COVER 5FT NE ++ NO 1190436E 32FT N C/L PALMDALE BLVD + 135FT W C/L 125TH ST E (UNIMPROVED) 2IN IP WITNESS 3FT UP 2FT N	SL 1028
PALMDALE (1955)	2718.211	RDBM MON IN WELL W/COVER 7FT NW PP NO 1190437E 32FT N C/L PALMDALE BLVD + 85FT E 125TH ST E (UNIMPROVED) 2IN IP WITNESS 3FT UP 2FT N	SL 1029
PALMDALE (1955)	2726.241	RDBM MON 5FT NE PP NO 1190448E 32FT N C/L PALMDALE BLVD 20FT W C/L 130TH ST E (DIRT RD) 2IN IP WITNESS 3FT UP 2FT N	SL 1030

QUAD-YEAR	ELEV	D E S C R I P T I O N (INCLUDE QUAD AND YEAR IN DESCRIPTION)	BM NUMBER
PALMDALE (1955)	2727.002	CS MON MKD (T6N R10W 1/4 SEC 26-25) 15IN DN @ C/L INT PALMDALE BLVD + 130TH ST E	SL 1031
PALMDALE (1955)	2738.454	RDBM MON IN WELL W/COVER 5FT N PP NO 1190810E 35FT N C/L PALMDALE BLVD + 105FT W C/L 135TH ST E (DIRT RD) 2IN IP WITNESS 3FT UP 2FT N	SL 1032
PALMDALE (1955)	2739.938	RDBM MON IN WELL W/COVER 5FT N PP NO 1190811E 35FT N C/L PALMDALE BLVD + 115FT E C/L 135TH ST E (DIRT RD) 2IN IP WITNESS 3FT UP 2FT N	SL 1033
PALMDALE (1955)	2752.219	RDBM MON 5FT NE PP NO 1190822E 35FT N C/L PALMDALE BLVD 195FT W 140TH ST E (DIRT RD) 2IN IP WITNESS 3FT UP 2FT N	SL 1034
PALMDALE (1955)	2750.444	CS MON MKD (T6N R9W R10W 1/4 SEC CGR 25-30) 34IN DN @ C/L INT PALMDALE BLVD + 140TH ST E	SL 1035
PALMDALE (1955)	2761.726	RDBM MON IN WELL W/COVER 8FT NE PP NO 1190835E 35FT N C/L PALMDALE BLVD 85FT W C/L 145TH ST E (UNIMPROVED) 2IN IP WITNESS 3FT UP 2FT N	SL 1036
PALMDALE (1955)	2763.210	RDBM MON IN WELL W/COVER 7FT NW PP NO 1190837E 32FT N C/L PALMDALE BLVD 380FT E C/L 145TH ST E 2IN IP WITNESS 3FT UP 2FT N	SL 1037
PALMDALE (1955)	2771.586	RDBM TAG NR E END OF RK WL @ NW COR 150TH ST E + PALMDALE BLVD 48FT W + 30FT N C/L INT	SL 1038
PALMDALE (1955)	2770.301	CS MON MKD (T6N R9W 1/4 COR 29,30) 12IN DN @ C/L INT PALMDALE BLVD + 150TH ST E (PAVED INT)	SL 1039
PALMDALE (1955)	2780.015	RDBM MON IN WELL W/COVER 5FT SE TP NO 672265H 35FT S C/L PALMDALE BLVD 125FT W 155TH ST E (DIRT RD) 2IN IP WITNESS 3FT UP 2FT S	SL 1040
PALMDALE (1955)	2781.516	RDBM MON IN WELL W/COVER 10FT SW TP NO 585889H 35FT S C/L PALMDALE BLVD + 350FT E 155TH ST E (DIRT RD) 2IN IP WITNESS 3FT UP 2FT S	SL 1041
PALMDALE (1955)	2783.453	RDBM MON IN WELL W/COVER 6FT N PP NO 1190873E 35FT N C/L PALMDALE BLVD 50FT W C/L 160TH ST E (PROP BUT UNIMPROVED) 2IN IP WITNESS 3FT UP 2FT N	SL 1042
PALMDALE (1955)	2782.881	RDBM MON IN WELL W/COVER 7FT NW PP NO 1190874E 35FT N C/L PALMDALE BLVD 170FT E C/L 160TH ST E (PROP) 2IN IP WITNESS 3FT UP 2FT N	SL 1043
PALMDALE (1955)	2787.468	L+N IN CONC + RK WL 30FT N C/L PALMDALE BLVD @ C/L 165TH ST E PROD FROM S (30FT E C/L PVMT)	SL 1044
PALMDALE (1955)	2786.915	RDBM MON IN WELL W/COVER 6FT N PP NO 1190888E 35FT N C/L PALMDALE BLVD + 140FT E C/L 165TH ST E (PVMT TO S) 2IN IP WITNESS 3FT UP 2FT N	SL 1045
PALMDALE (1955)	2785.081	L+T NR W EDGE OF CONC PORCH TO HSE NO 17012 PALMDALE BLVD 100FT S C/L PALMDALE BLVD + 250FT E C/L 170TH ST E (PAVED)	SL 1046
PALMDALE (1955)	2782.398	RDBM MON IN WELL W/COVER 8FT NW PP NO 1190900E 35FT N C/L PALMDALE BLVD 515FT E 170TH ST E 2IN IP WITNESS 3FT UP 2FT N	SL 1047
PALMDALE (1955)	2776.690	RDBM MON IN WELL W/COVER 8FT NE TP NO 5-H 35FT N C/L PALMDALE BLVD 140FT W C/L 175TH ST E (DIRT RD) 2IN IP WITNESS 3FT UP 2FT N	SL 1048

QUAD-YEAR	ELEV	DESCRIPTION (INCLUDE QUAD AND YEAR IN DESCRIPTION)	BM NUMBER
PALMDALE (1955)	2777.571	RDBM MON IN WELL 8FT W PP NO 1218C11E 35FT S C/L PALMDALE BLVD 280FT E 175TH ST E (DIRT RD) 2IN IP WITNESS 3FT UP 2FT S	SL 1049
PALMDALE (1955)	2770.922	RDBM MON IN WELL W/COVER 10FT S PP NO 1218021E 38FT S C/L PALMDALE BLVD + 55FT W C/L 180TH ST E (PAVED TO N) 2IN IP WITNESS 3FT UP 2FT S	SL 1050
PALMDALE (1955)	2769.042	RDBM MON IN WELL W/COVER 8FT SW PP NO 693201E 40FT W C/L 180TH ST E (PAVED RD) + 110FT N C/L PALMDALE BLVD 2IN IP WITNESS 3FT UP 2FT W	SL 1051
PALMDALE (1955)	2746.143	CS MON MKD (T6N R9W 22,23,26,27) LIN DN @ C/L INT 180TH ST E (PAVED) + AVE Q (DIRT RD)	SL 1052
PALMDALE (1955)	2745.757	RDBM MON 7FT N PP NO 693207E 34FT W C/L 180TH ST E + 46FT N C/L AVE Q (DIRT RD) 2IN IP WITNESS 3FT UP 2FT W	SL 1053
PALMDALE (1955)	2725.625	L+T IN CONC WK @ SW COR HSE NO 39144 87FT E 180TH ST E + 210FT S AVE P-8 (DIRT RD)	SL 1054
PALMDALE (1955)	2722.705	RDBM MON IN WELL W/COVER 6FT W PP NO 82577E 60FT E C/L 180TH ST E + 32FT N C/L AVE P-8 2IN IP WITNESS 3FT UP 2FT N	SL 1055
PALMDALE (1955)	2706.270	RDBM MON IN WELL W/COVER 6FT W PP NO 767660E 35FT W C/L 180TH ST E 285FT S C/L AVE P (UNIMPROVED) 2IN IP WITNESS 3FT UP 2FT W	SL 1056
PALMDALE (1955)	2703.221	BR CAP IN CONC SQ POST 6IN UP MKD (USGS LS 19 1929) 35FT W C/L 180TH ST E + 5FT S C/L AVE P (PROP BUT UNIMPROVED)	SL 1057
PALMDALE (1955)	2686.036	RDBM MON IN WELL W/COVER 6FT NW PP NO 767666E 32FT W C/L 180TH ST E + 140FT S C/L AVE O-8 (PROP BUT UNIMPROVED) 2IN IP WITNESS 3FT UP 2FT W	SL 1058
PALMDALE (1955)	2684.495	BT SPK IN CONC IN WELL W/CS MON COVER @ C/L INT 180TH ST E + AVE O-8 (PROP BUT UNIMPROVED)	SL 1059
PALMDALE (1955)	2666.421	RDBM MON IN WELL W/COVER 7FT NW PP NO 1354768E 32FT W C/L 180TH ST E + 165FT S C/L AVE O 2IN IP WITNESS 3FT UP 2FT W	SL 1060
PALMDALE (1955)	2648.495	CSBM IN TOP OF 12IN CONC POST 6IN UP 33FT W C/L 180TH ST E + AVE N-8 0.5 MI N AVE O 5FT N PP NO 767679E MKD (BM 106-85 1959 RE 58 69)	SL 1061
PALMDALE (1955)	2629.396	CSBM IN TOP OF 12IN CONC POST 6IN UP 40FT W CTR OF 180TH ST E 32FT N CTR AVE N 5FT W PP NO 767685E MKD (BM 106-86 1959 RE 58 69)	SL 1062
PALMDALE (1955)	2614.291	CSBM IN TOP OF 12IN CONC POST 6IN UP 33FT W CTR OF 180TH ST E + AVE M-8 0.5 MI S AVE M 22FT N PP NO 767694E MKD (BM 106-87 1959 RE 58 69)	SL 1063
BASELINE (1955)	2606.244	USGS MON IN TOP OF 6IN CONC POST FLUSH 26FT E CTR 180TH ST E (DIRT RD) 32FT S CTR AVE M (DIRT RD) 60FT SE WHITE CONC SIGN POST MKD (USGS IN COOPERATION W/LA CO LS 18 1929 RE 1941)	SL 1064
BASELINE (1955)	2593.866	CSBM IN TOP OF 12IN CONC POST 6IN UP 24FT N CTR AVE M (DIRT RD) 0.5 MI W 180TH ST E + 39FT SW 2IN IP + CONC PLUG WITH T+N MKD (LA CO ENG) 12IN UP MKD (BM 106-89 1959 RE 58 69)	SL 1065

QUAD-YEAR	ELEV	DESCRIPTION (INCLUDE QUAD AND YEAR IN DESCRIPTION)	BM NUMBER
BASELINE (1955)	2584.374	CSBM TOP OF 12IN CONC POST 6IN UP 124FT S CTR AVE M (DIRT RD) 23FT W CTR 170TH ST E 19FT S PP NO 423982E MKD (BM 106-90 1959 RE 58 69)	SL 1066
BASELINE (1955)	2575.387	CS MON IN WELL W/COVER MKD (T7N T6N R9W 31,32, 5,6) @ C/L INT 150TH ST + AVE M (IMPROVED TO E)	SL 1102
BASELINE (1955)	2576.070	RDBM MON IN WELL W/COVER 5FT NE PP NO 28FT E C/L 150TH ST E + 193FT S C/L AVE M (IMPRCVD TO E) 2IN IP WITNESS 3FT UP 2FT N	SL 1103
PALMDALE (1955)	2586.898	CS MON IN WELL W/COVER MKD (T6N R9W 1/4 SEC 5,6) @ C/L INT 150TH ST E + AVE M-8 (UNIMPROVED)	SL 1104
PALMDALE (1955)	2587.162	L+T IN CONC @ DRWY GATE TO FARM HSE 50FT N C/L AVE M-8 (DIRT RD) + 360FT E C/L 150TH ST E	SL 1105
PALMDALE (1955)	2602.851	RDBM MON IN WELL W/COVER 5FT NE PP NO X1181E 25FT E C/L 150TH ST E + 270FT N AVE N (DIRT RD) 2IN IP WITNESS 3FT UP 2FT E	SL 1106
PALMDALE (1955)	2603.093	CS MON IN WELL W/COVER MKD (T7N R9W 5,6,7,8) @ C/L INT 150TH ST E + AVE N (DIRT RD)	SL 1107
PALMDALE (1955)	2614.595	RDBM MON IN WELL W/COVER 5FT SE PP NO 799849E 25FT E C/L 150TH ST E + 175FT N C/L AVE N-8 (UNIMPROVED) 2IN IP WITNESS 3FT UP 2FT N	SL 1108
PALMDALE (1955)	2614.178	CS MON IN WELL W/COVER MKD (T6N R9W 1/4 SEC 7,8) @ C/L INT 150TH ST E + AVE N-8 (UNIMPROVED)	SL 1109
PALMDALE (1955)	2644.863	CS MON IN WELL W/COVER MKD (T6N R9W 1/4 SEC 7,18) @ C/L INT AVE O + 145TH ST E	SL 1110
PALMDALE (1955)	2647.829	L+T IN CONC STANDPIPE 35FT N C/L AVE O + 17FT W C/L 145TH ST E	SL 1111
PALMDALE (1955)	2704.223	CS MON IN WELL W/COVER MKD (T6N R9W CTR SEC 18) @ C/L INT 145 ST E + AVE O-8 (UNIMPROVED)	SL 1112
PALMDALE (1955)	2710.355	RDBM MON 8FT S PP NO 1201923E 35FT E C/L 145TH ST E + 70FT S C/L AVE O-8 (UNIMPROVED) 2IN IP WITNESS 3FT UP 2FT E	SL 1113
PALMDALE (1955)	2797.442	CS MON MKD (T6N R9W 1/4 SEC 18,19) 9IN DN 6FT W OF W EDGE MAC PVMT @ C/L INT 145TH ST E + AVE P	SL 1114
PALMDALE (1955)	2799.140	RDBM MON IN WELL W/COVER 35FT E C/L 145TH ST E + 75FT S C/L AVE P (UNIMPROVED) 2IN IP WITNESS 3FT UP 2FT E	SL 1115
PALMDALE (1955)	2771.809	RDBM MON IN WELL W/COVER 35FT E C/L 145TH ST E + 100FT N C/L AVE P-8 (UNIMPROVED) 2IN IP WITNESS 3FT UP 2FT E	SL 1116
PALMDALE (1955)	2766.648	RDBM MON IN WELL W/COVER 35FT E C/L 145TH ST E + 100FT S C/L AVE P-8 (UNIMPROVED) 2IN IP WITNESS 3FT UP 2FT E	SL 1117
PALMDALE (1955)	2742.898	CSBM MON MKD (CSBM RE 58 69 BM Q145E) IN CONC 3FT W TP NO 632132H 45FT W C/L 145TH ST E 35FT S AVE Q	SL 1118
PALMDALE (1955)	2743.744	RDBM MON IN WELL W/COVER 9FT W TP NO 632131H 35FT S C/L AVE Q + 235FT E C/L 145TH ST E 2IN IP WITNESS 3FT UP 2FT S	SL 1119
PALMDALE (1955)	2788.387	BR CAP MON MKD (USGS IN COOPERATION WITH LA CO LS 32 1929) IN CONC BLOCK 8IN UP 30FT N C/L AVE Q + 35FT W C/L 150TH ST E	SL 1120

QUAD-YEAR	ELEV	DESCRIPTION (INCLUDE QUAD AND YEAR IN DESCRIPTION)	BM NUMBER
PALMDALE (1955)	2785.608	CS MON MKD (T6N R9W 19,20,29,30) 18IN DN @ C/L INT AVE Q + 150TH ST E	SL 1121
PALMDALE (1955)	2808.479	L+T IN CONC PATIO SLAB @ HSE NE COR 165TH ST E + AVE R 140FT E C/L 165TH ST E + 170FT N C/L AVE R (DIRT RD)	SL 1122
PALMDALE (1955)	2809.938	L+BN IN CONC BASE TO 2IN IP @ NE COR 165TH ST E + AVE R (DIRT RD) 67FT E + 40FT N C/L INT	SL 1123
PALMDALE (1955)	2832.399	L+BN IN CONC @ N GATE TO FARM 1 MI S PALMDALE BLVD 25FT S PP NO 325110E 30FT E C/L 165TH ST E 230FT N C/L AVE R-8 (PROP BUT UNIMPROVED)	SL 1124
PALMDALE (1955)	2834.203	L+BN IN CONC @ S GATE TO FARM 1 MI S PALMDALE BLVD 20FT N PP NO 325111E 30FT E C/L 165TH ST E 9FT N C/L AVE R-8 (PROP BUT UNIMPROVED)	SL 1125
PALMDALE (1955)	2857.829	CS MON IN WELL 18IN DN W/COVER MKD (T5N T6N R9W SEC 33,4,5) @ C/L INT 165TH ST E + AVE S (PAVED TO E)	SL 1126
PALMDALE (1955)	2862.848	RDBM MON IN WELL W/COVER 20FT E PP NO 325124E 42FT E 165TH ST E 230FT S C/L AVE S (PAVED TO E) 2IN IP WITNESS 3FT UP 2FT E	SL 1127
PALMDALE (1955)	2887.004	RDBM MON IN WELL W/COVER 20FT E PP NO 35134E 42FT E C/L 165TH ST E 290FT N C/L AVE S-8	SL 1128
PALMDALE (1955)	2892.005	RDBM MON IN WELL W/COVER 80FT E PP NO 325136E 42FT E C/L 165TH ST E 210FT S C/L AVE S-8 (PROP BUT UNIMPROVED) 2IN IP WITNESS 3FT UP 2FT N	SL 1129
PALMDALE (1955)	2918.803	L+T NR S EDGE CONC PORCH SLAB TO HSE NO 36414 165TH ST E @ NE COR AVE T (DIRT RD) 148FT E + 148FT N C/L INT	SL 1130
PALMDALE (1955)	2921.966	L+T NR W EDGE OF CONC SLAB TO HSE NO 16516 AVE T (DIRT RD) @ SE COR 165TH ST E + AVE T 130FT E + 120FT S C/L INT	SL 1131
PALMDALE (1955)	2951.160	RDBM MON IN WELL W/COVER 15FT E PP NO 325156E 35 FT E C/L 165TH ST E + 275FT N C/L AVE T-8 (DIRT RD) 2IN IP WITNESS 3FT UP 2FT E	SL 1132
PALMDALE (1955)	2959.048	RDBM MON IN WELL W/COVER 15FT E PP NO 325158E 35FT E C/L 165TH ST E + 203FT S C/L AVE T-8 (DIRT RD) 2IN IP WITNESS 3FT UP 2FT E	SL 1133
PALMDALE (1955)	2994.298	RDBM MON IN WELL W/COVER 15FT E PP NO 325167E 35FT E C/L 165TH ST E + 275FT N AVE U (UNIMPROVED) 2IN IP WITNESS 3FT UP 2FT E	SL 1134
PALMDALE (1955)	2998.453	CS MON MKD (T5N R9W SEC COR 8,9,16,17) 12IN DN @ C/L INT 165TH ST E + AVE U (PROP BUT UNIMPROV)	SL 1135
PALMDALE (1955)	3034.701	RDBM TAG IN LEAD IN NW LEG OF HIGH VOLTAGE LINE TOWER NO 213-6 135FT E C/L 165TH ST + 655FT N C/L AVE U-8 (UNIMPROVED) 1.1 MI N PEARBLOSSOM HWY	SL 1136
PALMDALE (1955)	3037.893	RDBM MON IN WELL W/COVER 18FT E PP NO 35FT E C/L 165TH ST E + 515FT N C/L AVE U-8 (PROP BUT UNIMPROVED) 140FT S HIGH VOLTAGE LINE 2IN IP WITNESS 3FT UP 2FT E	SL 1137
PALMDALE (1955)	3096.110	RDBM MON IN WELL W/COVER 14FT E PP NO 325189E 35FT E C/L 165TH ST E + 270FT N C/L AVE V (PROP) 2IN IP WITNESS 3FT UP 2FT E	SL 1138

QUAD-YEAR	ELEV	DESCRIPTION (INCLUDE QUAD AND YEAR IN DESCRIPTION)	BM NUMBER
PALMDALE (1955)	3101.480	CS MON IN WELL W/COVER MKD (T5N R9W 16,17,20,21) @ C/L INT 165TH ST E + AVE V (PROP BUT UNIMPROV)	SL 1139
PALMDALE (1955)	3165.730	CS MON IN WELL W/COVER MKD (T5N R9W 1/4 COR 20,21) @ C/L INT PEARBLCSSOM HWY + 165TH ST E	SL 1140
BASELINE (1955)	2525.854	CSBM MON MKD (BM 107-18 1961 RE 58 69) IN CONC SQ 4IN UP 6FT NE PP NO 771338E 36FT N C/L AVE M + 36FT E C/L 90TH ST E	SL 1182
PALMDALE (1955)	2536.404	CSBM MON MKD (BM 107-17 1961 RE 58 69) IN CONC SQ 4IN UP 4FT E PP NO 771329E 38FT E C/L 90TH ST E + 40FT N AVE M-8 (PROP)	SL 1183
PALMDALE (1955)	2554.583	CSBM MON MKD (BM 107--16 1961 RE 58 69) IN CONC SQ 4IN UP 20FT SWLY PP NO 343329E 40FT S C/L AVE N (PAVED RD TO W) + 30FT W C/L 90TH ST E	SL 1184
PALMDALE (1955)	2560.345	CSBM MON MKD (BM 107-15 1961 RE 58 69) IN CONC SQ 6IN UP 25FT S C/L AVE N-4 (DIRT RD) + 60FT E C/L 90TH ST E	SL 1185
PALMDALE (1955)	2576.939	CSBM BR CAP MON MKD (BM 107-14 1961 RE 58 69) IN CONC SQ 6IN UP 3FT E PP NO 771302E 33FT E C/L 90TH ST E + 205FT N C/L AVE O	SL 1186
PALMDALE (1955)	2589.635	CSBM BR CAP MON MKD (BM 107-13 1960 RE 58 69) IN CONC SQ 6IN UP 3FT E PP NO 35FT E C/L 90TH ST E + 300FT N C/L AVE O-8 (DIRT RD)	SL 1187
PALMDALE (1955)	2602.474	CSBM BR CAP MON MKD (BM 107-12 1960 RE 58 69) IN CONC SQ 6IN UP 2FT S PP NO 656066E 30FT N C/L AVE P (DIRT RD) + 68FT E C/L 90TH ST E	SL 1188
PALMDALE (1955)	2613.444	CSBM BR CAP MON MKD (BM 107-11 1960 RE 58 69) IN CONC SQ 6IN UP 3FT N PP NO 878724E 36FT E C/L 90TH ST E + 20FT S C/L AVE P-8 (PROP) + 0.5 MI N AVE Q	SL 1189
PALMDALE (1955)	2613.358	L+T IN 1ST CONC STEP TO HSE NO 39153 90TH ST E 80FT W C/L 90TH ST E + 145FT S C/L AVE P-8 (PROP) 0.5 MI N AVE Q	SL 1190
PALMDALE (1955)	2625.952	CS MON MKD (T6N R10W SEC COR 19,20,29,30) 22IN DN @ C/L INT 90TH ST E + AVE Q (PAVED RD TO E)	SL 1191
PALMDALE (1955)	2644.016	CSBM BR CAP MON MKD (BM 107-9 1960 RE 58 69) IN CONC SQ 4IN UP 3FT N PP NO 825968E 30FT N C/L PALMDALE BLVD + 65FT W C/L 90TH ST E	SL 1193
PALMDALE (1955)	3044.620	RDBM TAG IN CONC CULV HDWL @ SE COR PEARBLOSSOM HWY + 123RD ST E 20FT S + 20FT E C/L INT	SL 1194
PALMDALE (1955)	3043.993	CS MON IN WELL W/COVER MKD (CS RE 63) @ C/L INT PEARBLOSSOM HWY + 123RD ST E	SL 1195
PALMDALE (1955)	3067.660	CS MON IN WELL W/COVER MKD (CS RE 63) @ C/L INT 123RD ST E (PAVED) + AVE V-10 (PAVED)	SL 1196
PALMDALE (1955)	3093.094	L+T IN SE COR CONC WK TO CHURCH BLDG 31FT W C/L 123RD ST E + 90FT N C/L AVE V-12	SL 1197
PALMDALE (1955)	3096.048	CS MON IN WELL W/COVER MKD (CS RE 63) @ C/L INT AVE V-12 + 123RD ST E (PAVED RD TO N)	SL 1198
PALMDALE (1955)	3175.158	CS MON MKD (CS RE 63) 18IN DN @ C/L INT 123RD ST E (DIRT RD) + AVE V-14 (DIRT RD)	SL 1199

QUAD-YEAR	ELEV	DESCRIPTION (INCLUDE QUAD AND YEAR IN DESCRIPTION)	BM NUMBER
PALMDALE (1955)	3129.207	CS BR CAP MON MKD (CS PROP COR RE 63) IN CONC POST 2IN UP 30FT N C/L AVE V-14 + 150FT W C/L 123RD ST E	SL 1200
PALMDALE (1955)	3127.211	BT SPK IN L 10IN E NW COR RESERVOIR @ E END PROP COUNTY PARK 161FT N C/L AVE V-14 + 141FT W C/L 123RD ST E	SL 1201
PALMDALE (1955)	3375.599	RDBM MON IN WELL W/COVER 45FT W C/L 121ST ST E (DIRT RD) + 47FT N C/L AVE W-8 (DIRT RD) 0.85 MI N FT TEJON RD 2IN IP WITNESS MKR 3FT UP 2FT E	SL 1203
PALMDALE (1955)	3376.510	RDBM MON IN WELL W/COVER 35FT E C/L 121ST ST E (DIRT RD) + 60FT S C/L AVE W-8 (DIRT RD) 0.85 MI N FT TEJON RD 2IN IP WITNESS 3FT UP 2FT E	SL 1204
PALMDALE (1955)	2946.777	CS MON IN TOP OF 12IN CONC POST 5IN UP PEAR- BLOSSOM HWY (ST HWY NO 138) + 96TH ST E 31FT S C/L PEARBLOSSOM HWY 177FT E SLY C/L PROD 96TH ST E MKD (BM 106-22 1958 RE 58 69)	SL 1205
PALMDALE (1955)	2954.072	CS MON TOP OF 12IN CONC POST 6IN UP PEARBLOSSOM HWY 0.55 MI E 96TH ST E 40FT S C/L PEARBLOSSOM HWY 50FT W CTR OF WASH @ HWY STA I-645+65 MKD (BM 106-23 1958 RE 58 69)	SL 1206
PALMDALE (1955)	3450.510	CSBM TOP OF 12IN CONC POST 6IN UP 24FT S CTR ELIZABETH LAKE PINE CN RD 0.9 MI E SAN FRANCIS- QUITO CN RD 10FT N PP NO 767422E 37FT E S END OF CULV NO 12.71 + 62FT W OF DIRT RD MKD (BM 111-27 1960 RE 5869)	SL 1331
PALMDALE (1955)	3405.789	CSBM TOP OF 12IN CONC POST 6IN UP 24FT N CTR ELIZABETH LAKE PINE CN RD 1.4 MI E SAN FRANCIS- QUITO CN RD 2FT N TP 92FT SW PP NO 767436E 71FT W FROM SE COR FENCE BY DIRT RD MKD (BM 111- 26 1960 RE 5869)	SL 1332
PALMDALE (1955)	3423.092	CSBM TOP OF 12IN CONC POST 6IN UP 38FT N CTR ELIZABETH LAKE PINE CN RD 3.7 MI W 90TH ST W 3FT S TP NO 111621 0.15 MI TO W END N CULV HOWL NO 11.42 MKD (BM 111-25 1960 RE 5869)	SL 1333
PALMDALE (1955)	3374.053	CSBM TOP OF 12IN CONC POST 6IN UP 83FT S CTR ELIZABETH LAKE PINE CN RD 14FT E CTR DIRT RD 3.1 MI W 90TH ST W 87FT SE PP NO 767645E MKD (BM 111-24 1960 RE 5869)	SL 1334
PALMDALE (1955)	3304.518	CSBM TOP OF 12IN CONC POST 6IN UP 28FT N CTR ELIZABETH LAKE PINE CN RD 2FT S TP NO 111581 97FT E N END OF CULV NO 10.67 2.6MI W 90TH ST W MKD (BM 111-23 1960 RE 5869)	SL 1335
PALMDALE (1955)	3275.575	CSBM TOP OF 12IN CONC POST 6IN UP 24FT N CTR ELIZABETH LAKE PINE CN RD 3FT S TP NO 111563 132FT E GUIDE POLE NO 1021956E 2.1 MI W 90TH ST W MKD (BM 111-22 1960 RE 5869)	SL 1336
PALMDALE (1955)	3229.127	CSBM TOP OF 12IN CONC POST 6IN UP 23FT S CTR ELIZABETH LAKE PINE CN RD 1.6 MI W 90TH ST W 3FT N PP NO 1021891 57FT W OF NS FENCE MKD (BM 111-21 1959 RE 5869)	SL 1337
PALMDALE (1955)	3201.890	CSBM TOP OF 12IN CONC POST 6IN UP 31FT N CTR ELIZABETH LAKE PINE CN RD 1.1 MI W 90TH ST W 3FT NE TP NO 111522 + 0.1 MI W CULV NO 9.01 MKD (BM 111-20 1959 RE 5869)	SL 1338

QUAD-YEAR	ELEV	D E S C R I P T I O N (INCLUDE QUAD AND YEAR IN DESCRIPTION)	BM NUMBER
PALMDALE (1955)	3174.825	USGSBM TOP OF 3-1/2IN IP 124FT S CTR ELIZABETH LAKE PINE CN RD 0.6 MI W 90TH ST W 228FT SE PP NO 1021876E + 149FT SW PP NO 1021875E MKD (LA 3177)	SL 1339
PALMDALE (1955)	3132.205	CSBM TOP OF 12IN CONC POST 6IN UP 27FT S CTR ELIZABETH LAKE PINE CN RD 0.1 MI W 90TH ST W 3FT N PP NO 825309E MKD (BM 111-18, 1959 RE 5869)	SL 1340
PALMDALE (1955)	3111.906	CSBM TOP OF 12IN CONC POST 6IN UP 30FT S CTR ELIZABETH LAKE PINE CN RD 0.4 MI E 90TH ST W 4FT S PP NO 135591E MKD (BM 111-17 1959 RE 5869)	SL 1341
PALMDALE (1955)	3068.892	CSBM TOP OF 12IN CONC POST 6IN UP 29FT S CTR ELIZABETH LAKE PINE CN RD 0.2 MI W LEONA VALLEY SCHOOL 3FT N PP NO 574563E 9FT SE CULV NO 704 MKD (BM 111-16 1959 RE 5869)	SL 1342
PALMDALE (1955)	3074.487	CSBM TOP OF 12IN CONC POST 6IN UP 30FT N CTR ELIZABETH LAKE PINE CN RD 0.2 MI E LEONA VALLEY SCHOOL 3FT N PP NO 486033H MKD (BM 111-15 1959 RE 5869)	SL 1343
PALMDALE (1955)	3067.620	2IN IP + BR CAP IN CONC 15FT N EDGE OF PVMT ELIZABETH LAKE PINE CN RD 0.4 MI E LEONA VALLEY SCHOOL 2FT W TP NO 486030H MKD (BM NO 16)	SL 1344
PALMDALE (1955)	3065.297	2IN IP IN CONC CN ELIZABETH LAKE PINE CN RD NR GODDE HILL RD 4FT N TP NO 486023H MKD (PC NO 1)	SL 1345
PALMDALE (1955)	3056.929	CSBM TOP OF 12IN CONC POST 6IN UP 22FT N C/L ELIZABETH LAKE PINE CN RD 57FT NW C/L GODDE HILL RD 2FT N PP NO 673463H MKD (BM 111-14 1959 RE 5869)	SL 1346
PALMDALE (1955)	3057.564	2IN IP IN CONC 60FT N + 80FT E C/L INT ELIZABETH LAKE PINE CN RD + GODDE HILL RD MKD (BM NO 15)	SL 1347
PALMDALE (1955)	3024.249	CSBM TOP OF 12IN CONC POST 6IN UP 21FT S CTR ELIZABETH LAKE PINE CN RD 1.2 MI E LEONA VALLEY SCHOOL 516FT E PP NO 574543E 31FT SE OF S END CTR OF CULV NO 5.64 0.5 MI E GODDE HILL RD MKD (BM 111-13 1959 RE 5869)	SL 1348
PALMDALE (1955)	3028.826	CSBM TOP OF 12IN CONC POST 6IN UP 26FT S CTR ELIZABETH LAKE PINE CN RD 1.7 MI E LEONA VALLEY SCHOOL 106FT E PP NO 574563E 25FT W PP NO 673453H 0.1 MI E CULV NO 526 MKD (BM 111-12 1959 RE 5869)	SL 1349
PALMDALE (1955)	3010.988	2IN IP IN CONC 200FT S ELIZABETH LAKE PINE CN RD 70FT S ROW OF LARGE POPLAR TREES 300FT E GATE TO MOFFIT TURKEY RANCH MKD (BM NO 13)	SL 1350
PALMDALE (1955)	2966.579	CSBM TOP OF 12IN CONC POST 6IN UP 28FT N CTR ELIZABETH LAKE PINE CN RD 2FT N PP NO 485971H 1.5 MI E GODDE HILL RD MKD (BM 111-11 1959 RE 5869)	SL 1351
PALMDALE (1955)	2934.077	3-1/2IN BR TABLET IN 8X8 CONC POST 6IN UP 66FT W CTR ELIZABETH LAKE PINE CN RD 70FT NW N END W CULV WL NO 4.41 1.7 MI E GODDE HILL RD MKD (K-10 1929)	SL 1352
PALMDALE (1955)	2933.768	2IN IP IN CONC 70FT S ELIZABETH LAKE PINE CN RD 350FT E GATE TO LOCKE TURKEY RANCH MKD (BM 12)	SL 1353

QUAD-YEAR	ELEV	DESCRIPTION (INCLUDE QUAD AND YEAR IN DESCRIPTION)	BM NUMBER
PALMDALE (1955)	2920.152	CSBM TOP OF 12IN CONC PCST 6IN UP 36FT S CTR ELIZABETH LAKE PINE CN RD 202FT E DIRT RD 3FT S PP NO 485958H 2.0 MI E GODDE HILLS RD MKD (BM111-10 1959 RE 5869)	SL 1354
PALMDALE (1955)	2906.525	CSBM TOP OF 12IN CONC PCST 6IN UP 37FT N CTR ELIZABETH LAKE PINE CN RD 2.4 MI E GODDE HILL RD 3FT S PP NO 574515E 150FT E OF E SIDE OF GATE MKD (BM 111-9 1959 RE 5869)	SL 1355
PALMDALE (1955)	2850.839	CSBM TOP OF 12IN CONC PCST 6IN UP 38FT N CTR ELIZABETH LAKE PINE CN RD 2.2 MI W 25TH ST W 3FT W TP NO 36/15 L/8 20FT S PP NO 485930H MKD (BM 111-8 1959 RE 5869)	SL 1356
PALMDALE (1955)	2827.648	CSBM TOP OF 12IN CONC PCST 6IN UP ON ELIZABETH LAKE PINE CN RD 1.7 MI 25TH ST W 14FT W OF W CONC HDWL LINE PRCD S MKD (BM 111-7 1959 RE 5869)	SL 1357
PALMDALE (1955)	2820.598	3-1/2IN IP W/BR CAP IN BOTTOM OF CREEK 46FT S CTR ELIZABETH LAKE PINE CN RD 1.6 MI W 25TH ST W 318FT E SL 1357 MKD (US FOREST RESERVE BOUNDARY POST NO 100 1905)	SL 1358
PALMDALE (1955)	2829.436	3-1/2IN IP W/BR TABLET 18IN UP 195FT S CTR ELIZABETH LAKE PINE CN RD 1.2 MI W 25TH ST W MKD (USGSBM EL 2831)	SL 1359
PALMDALE (1955)	2800.495	CSBM TOP OF 12IN CONC POST 6IN UP 5FT N CTR ELIZABETH LAKE PINE CN RD 43FT W PP NO 574488E 1.0 MI W 25TH ST W MKD (BM 111-5 1958 RE 5869)	SL 1360
PALMDALE (1955)	2777.998	2IN IP IN BR CAP IN CONC S SIDE ELIZABETH LAKE PINE CN RD 0.5 MI W 25TH ST W MKD (BM NO 7)	SL 1361
PALMDALE (1955)	2788.226	3-1/2IN BR TABLET IN 6IN CONC POST 55FT N ELIZABETH LAKE PINE CN RD 73FT W PP NO 574484E MKD (K-11 1929)	SL 1362
PALMDALE (1955)	2773.193	CSBM TOP OF 12IN CONC PCST 6IN UP 42FT N CTR ELIZABETH LAKE PINE CN RD 4FT E PP NO 57448E MKD (BM 111-4 1959 RE 5869)	SL 1363
PALMDALE (1955)	2750.454	CSBM TOP OF 12IN CONC POST 6IN UP 29FT N ELIZABETH LAKE PINE CN RD 140FT E 25TH ST W 3FT N PP NO 640332H MKD (BM 111-3 1959 RE 5869)	SL 1364
PALMDALE (1955)	2744.644	2IN IP IN BR CAP IN CONC 169FT ALONG C/L PROD ELIZABETH LAKE PINE CN RD 0.4 MI E 25TH ST W MKD (BM NO 5)	SL 1365
PALMDALE (1955)	2757.455	CSBM IN WELL 20IN CN S SIDE AVE Q + 20TH ST W 26FT N PP NO 640395H MKD (T6N R12W 20,21,29,28)	SL 1366
PALMDALE (1955)	2758.692	CSBM IN WELL 20IN DN ON AVE @ 0.5 MI W 10TH ST W 53FT S PP NO 1161727E 62FT NE TP NO 7 MKD (T6N R12W 21,28 1/4 COR)	SL 1367
PALMDALE (1955)	3274.242	USC+GS MON IN 12IN CONC POST 2IN UP 35FT W CTR GODDE HILL RD 11FT S CTR DIRT RD 0.7 MI N ELIZABETH LAKE PINE CN RD 20FT S OF S END STEEL GUARD RAIL MKD (F-1045 1960)	SL 1368
PALMDALE (1955)	3257.705	USC+GS MON IN 12IN CONC POST 6IN UP 31FT E CTR GODDE HILL RD 1.4 MI N ELIZABETH LAKE PINE CN RD 16FT S OF N END 2FT CHAIN LINK FENCE MKD (E-1045)	SL 1369

QUAD-YEAR	ELEV	DESCRIPTION (INCLUDE QUAD AND YEAR IN DESCRIPTION)	BM NUMBER
PALMDALE (1955)	2980.281	USC+GS MON IN 12IN CONC POST 6IN UP 37FT W CTR GODDE HILL RD 32FT S CTR EW DIRT RD 2.2 MI N ELIZABETH LAKE PINE CN RD MKD (C-1045 1960)	SL 1370
PALMDALE (1955)	2910.253	CSBM TOP OF 12IN CONC PGST 6IN UP W SIDE GODDE HILL RD 0.4 MI S AVE N 95FT N PP NO 1183983E MKD (BM 112-4 1960 RE 5869)	SL 1371
PALMDALE (1955)	2733.580	USC+GS MON TOP OF 12IN CONC POST 6IN UP 20FT E CTR 60TH ST W 26FT N CTR AVE N 2FT N PP NO 656179E MKD (C-1045 1960)	SL 1372
BASELINE (1955)	2525.186	CSBM TOP OF 12IN CONC PGST 5IN UP 34FT N C/L AVE M 0.5 MI W 30TH ST W 6FT E PP NO 1054605E OPP DRWY TO HSE NO 3356 MKD (BM 104-7 1958 RE 5869)	SL 1373A
BASELINE (1955)	2516.552	CS MON @ C/L INT AVE M + 35TH ST W 175FT W OF DRWY TO HSE NO 3356 AVE M MKD (R12W T7N OVER T6N 31-6 1/4 COR)	SL 1374A
BASELINE (1955)	2567.289	CS MON IN WELL W/COVER @ C/L INT AVE M + 45TH ST W (PRCP) ON CREST OF HILL 800FT W C/L INT AVE M + QUARTZ HILL RD	SL 1376A
BASELINE (1955)	2529.271	CSBM TOP OF 12IN CONC PGST 4IN UP 41FT W BT SPK W+T @ INT OF AVE M + 47TH ST W 28FT S CTR OF PVMT 4FT W PP NO 168073 MKD (BM 104-12 1958 RE 5869)	SL 1377A
PALMDALE (1955)	2650.832	CSBM IN WELL 18IN DN @ C/L INT 10TH ST W + AVE O-8 67FT SE PP NO 759281E 171FT SW TP NO 593015H + 39FT NW TP NO 593014H MKD (1/4 COR 15, 16, T6N R12W RE 63)	SL 1378
PALMDALE (1955)	2631.726	CSBM IN WELL 11IN DN @ C/L INT 10TH ST W + AVE O 114FT SE TP NO 609724H 46FT SW TP NO 593028H + 92FT NE PP NO 864950E MKD (9,10,15,16, T6N R12W 1928)	SL 1379
PALMDALE (1955)	2639.918	CSBM IN 12IN CONC PGST 4IN UP 25FT E C/L 15TH ST W 88FT N C/L AVE O 18FT S TP NO 609975H	SL 1380
PALMDALE (1955)	2652.445	CSBM TOP OF 12IN CONC PGST 6IN UP 34FT W C/L 20TH ST W 99FT N C/L AVE O 5FT N PP NO 938378E MKD (BM 110-11 1958 RE 5869)	SL 1381
PALMDALE (1955)	2621.004	CSBM TOP OF 12IN CONC POST 4IN UP 33FT W C/L 20TH ST W 145FT N C/L AVE N-8 6FT N PP NO 878649E MKD (BM 110-12 1958 RE 5869)	SL 1382A
PALMDALE (1955)	2587.629	CSBM IN WELL 17IN DN @ C/L INT AVE N + 20TH ST W 74FT SE PP NO 878634E 104FT NE PP NO 878635E 52FT NW TP NO 593081H MKD (4,5,8,9, R12W T6N 1929)	SL 1383A
PALMDALE (1955)	2556.078	CSBM TOP OF 12IN CONC PGST 4IN UP 38FT W C/L 20TH ST W 55FT N C/L AVE M-8 5FT N PP NO 825603E MKD (BM 110-14 1958 RE 5869)	SL 1384A
PALMDALE (1955)	3813.890	RDBM MON IN WELL W/COVER 3FT N OF FIRE DEPT TP NO 116784 33FT S C/L PALLETT CREEK RD 0.5 MI E OF 131ST ST E 2IN IP WITNESS 3FT UP 2FT S	SL 1385
PALMDALE (1955)	3807.489	RDBM MON IN WELL W/COVER 4FT W FIRE DEPT TP NO 116786 44FT S C/L PALLETT CREEK RD 0.5 MI E 131ST ST E 2IN IP WITNESS 3FT UP 2FT S	SL 1386
PALMDALE (1955)	3718.201	RDBM MON IN WELL W/COVER 3FT S OF FIRE DEPT TP NO 116806 33FT S C/L PALLETT CREEK RD 1.1 MI NELY FROM 131ST ST E 2IN IP WITNESS 3FT UP 2FT S	SL 1387

QUAD-YEAR	ELEV	DESCRIPTION (INCLUDE QUAD AND YEAR IN DESCRIPTION)	BM NUMBER
PALMDALE (1955)	3710.331	RDBM MON IN WELL W/COVER 5FT S FIRE DEPT TP NO 806 40FT N C/L PALLETT CREEK RD 1.1 MI NELY 131ST ST E 2IN IP MKR 2FT N	SL 1388
PALMDALE (1955)	3593.297	RDBM MON IN WELL W/COVER 4FT S FIRE DEPT TP NO 116831 36FT S C/L PALLETT CREEK RD 1.8 MI NE FROM 131ST ST E 0.5 MI SWLY VALYERMO RD 2IN IP MKR 2FT S	SL 1389
PALMDALE (1955)	3593.403	RDBM MON IN WELL W/COVER 4FT W FIRE DEPT TP NO 116832 30FT N C/L PALLETT CREEK RD 1.8 MI NELY FROM 131ST ST E 0.5 MI SWLY OF VALYERMO RD 2IN IP MKR 2FT N	SL 1390
PALMDALE (1955)	3565.591	RDBM MON IN WELL W/COVER 7FT NLY FROM TP NO 510354 7FT NLY FROM TP NO 510354H 18FT W PALLETT CREEK RD 105FT S C/L FORT TEJON RD @ SE END BRIDGE B907	SL 1391
PALMDALE (1955)	3547.669	L+BN IN SW END BRIDGE NO 8213 CONC ABUT 17FT S C/L VALYERMO RD 200FT E PALLETT CREEK RD	SL 1392
PALMDALE (1955)	3547.691	L+BN IN SE END BRIDGE NO 213 CONC ABUT 17FT S C/L VALYERMO RD 258FT E PALLETT CREEK RD	SL 1393
PALMDALE (1955)	3602.235	CS MON MKD (LA CO FORESTRY DEPT LOT COR 1927) 12IN UP @ SW PRCP COR LA CO FIR STA NO 79 24FT N C/L VALYERMO RD 0.5 MI E PALLETT CREEK RD	SL 1394
PALMDALE (1955)	3617.028	RDBM TAG IN NE COR CONC DR TO FIRE STA NO 79 25FT N C/L VALYERMO RD + 0.5 MI E PALLETT CREEK RD	SL 1395
PALMDALE (1955)	3633.104	RDBM TAG IN SW END BRIDGE NO 1025 15FT S C/L VALYERMO RD 1 MI E PALLETT CREEK RD	SL 1396
PALMDALE (1955)	3633.245	RDBM TAG NE END BRIDGE NO 1025 15FT N C/L VALYERMO RD 1 MI E PALLETT CREEK RD	SL 1397
PALMDALE (1955)	3708.409	RDBM TAG IN 1ST STEP TO BLDG NO 3 US RANGER STA 115FT S C/L VALYERMO RD 280FT E C/L INT 157TH ST E + VALYERMO RD	SL 1398
PALMDALE (1955)	3807.691	BR CAP MON 8IN UP MKD (1/4 SEC COR T4N R9W 8/17) 0.6 MI FROM 157TH ST SE + 80FT N C/L VALYERMO RD	SL 1399
PALMDALE (1955)	3811.017	RDBM MON IN WELL W/COVER 27FT S PP NO 484676E + 115FT N C/L VALYERMO RD 0.6 MI FROM C/L 157TH ST E 2IN IP SITNESS 3FT UP 2FT N	SL 1400
PALMDALE (1955)	3893.260	BR CAP IN NELY COR ABUT TO BRIDGE NO 490 15FT N + 74FT W C/L INT VALYERMO RD + BOB S GAP RD MKD USGS BM LS 56-1929 RESET 1960)	SL 1401
PALMDALE (1955)	3893.779	2IN IP CONC PLUG + BRAD 53FT SWLY C/L VALYERMO RD + 103FT SELY C/L BOB S GAP RD PIPE IS 2IN UP	SL 1402
PALMDALE (1955)	3868.106	RDBM TAG IN CONC BASE TO WATER PUMP @ NE COR OF RESERVOIR 130FT W C/L BCB S GAP RD 150FT S OF PP NO 656055E 780FT S PAVED RD TO MOUNTAIN BROOK RANCH 0.5MI NLY VALYERMO RD	SL 1403
PALMDALE (1955)	3849.686	CS MON 6IN DN @ C/L BOB S GAP RD 93FT S PP NO 656056E 380FT S PAVED RD TO MOUNTAIN BROOK RANCH 0.5MI N VALYERMO RD MKD (T4N R9W SEC COR 8-9-17-16)	SL 1404
PALMDALE (1955)	3796.815	RDBM MON IN WELL W/COVER 58FT E C/L BOB S GAP RD + 65FT S CTR DIRT DRWY TO A FARM HSE (NO NUMBER) 2FT N BARB WIRE FENCE LINE 1.0MI NLY INT BOB S GAP RD + VALYERMO RD	SL 1405

QUAD-YEAR	ELEV	DESCRIPTION (INCLUDE QUAD AND YEAR IN DESCRIPTION)	BM NUMBER
PALMDALE (1955)	3807.459	RDBM MON IN WELL W/COVER 32FT W C/L BOB S GAP RD + 105FT N CTR DIRT DRWY TO FARM HSE (NO NUMBER) 1.0MI NLY OF INT BOB S GAP RD + VALYERMO RD A 2X36IN WITNESS 2FT W	SL 1406
PALMDALE (1955)	4004.721	RDBM MON IN WELL W/COVER 35FT S C/L BOB S GAP RD + 1.4MI NELY OF INT BOB S GAP RD + VALYERMO RD	SL 1407
PALMDALE (1955)	4015.443	RDBM TAG IN CONC FTG OF 2IN IP NR FENCE COR 44FT S C/L BOB S GAP RD + 47FT E C/L DIRT RD TO CHURCH HSE NO 17120 1.5MI NELY OF INT BOB S GAP RD + VALYERMO RD	SL 1408
PALMDALE (1955)	4042.308	RDBM MON IN WELL W/COVER 40FT S C/L BOB S GAP RD + 35FT W DIRT RD TO FARM HSE NO 17500 2.1MI NELY OF INT BOB S GAP RD + VALYERMO RD A 2X36IN WITNESS 2FT S	SL 1409
PALMDALE (1955)	4014.277	RDBM TAG IN SE COR CONC BOX INLET TO CULV NR SLY END OF BOB S GAP RD 20FT N C/L BOB S GAP RD + 2.3MI NELY OF INT BOB S GAP RD + VALYERMO RD	SL 1410
PALMDALE (1955)	3910.013	RDBM TAG 4FT N END OF ROCK RUBBLE WL @ BOB S GAP 18FT E C/L BOB S GAP RD + 1.9MI SELY OF INT BOB S GAP RD + 165TH ST E	SL 1411
PALMDALE (1955)	3902.903	RDBM TAG IN ROCK RUBBLE WL 178FT N SLY END @ BOB S GAP RD 18FT E C/L BOB S GAP RD 1.9MI SELY OF INT BOB S GAP RD + 165TH ST E	SL 1412
PALMDALE (1955)	3767.776	RDBM MON IN WELL W/COVER 41FT S C/L BOB S GAP RD 1.2MI SE INT BOB S GAP RD + 165TH ST E A 2X36IN WITNESS 2FT S	SL 1413
PALMDALE (1955)	3760.302	RDBM MON IN WELL W/COVER 26FT N C/L BOB S GAP RD 1.2MI SE INT BOB S GAP RD + 165TH ST E A 2X36IN WITNESS 2FT N	SL 1414
PALMDALE (1955)	3361.347	RDBM TAG IN CONC RIM OF CISTERN 35FT S OF TP NO 555800H 65FT S C/L BOB S GAP RD 0.8MI SELY OF INT 165TH ST E	SL 1415
PALMDALE (1955)	3646.964	RDBM MON IN WELL W/COVER 5FT S TP NO 555799H 37FT S C/L BOB S GAP RD 0.7MI SELY OF 165TH ST E A 2X36IN WITNESS 2FT S	SL 1416
PALMDALE (1955)	3501.866	RDBM TAG CONC @ BASE OF STONE PILLAR @ ENT TO CRYSTALAIR COUNTRY CLUB 8FT W C/L 165TH ST E PRCD 160FT S T5N R9W 1/4 SEC 32-33 CS MON 140FT SW C/L BOB S GAP RD	SL 1417
PALMDALE (1955)	3497.176	CS MON IN WELL W/COVER ON C/L 165TH ST E + C/L BOB S GAP RD PRCD FROM SE 160FT N ENT TO CRYSTALAIR COUNTRY CLUB MKD (T5N R9) 1/4 SEC COR 32-33 1926)	SL 1418
PALMDALE (1955)	3382.028	RDBM TAG IN SMALL CB ON S SIDE DIRT DRWY TO HSE NO 32907 37FT W C/L 165TH ST E 800FT N C/L AVE X (PRCP) + 1.4MI S PEARBLOSSOM HWY	SL 1419
PALMDALE (1955)	3380.923	RDBM TAG IN SMALL CB ON N SIDE DIRT DRWY TO HSE NO 32907 165TH ST E 38FT W C/L 165TH ST E 800FT N C/L AVE X (PRCP) 1.4MI S PEARBLOSSOM HWY	SL 1420
PALMDALE (1955)	3325.723	RDBM MON IN WELL W/COVER 4FT NE PP NO X2104E 28FT E C/L 165TH ST + 195FT S C/L AVE W-8 (PRCP) 1.0MI S PEARBLOSSOM HWY A 2X36IN WITNESS 2FT E	SL 1421

QUAD-YEAR	ELEV	DESCRIPTION (INCLUDE QUAD AND YEAR IN DESCRIPTION)	BM NUMBER
PALMDALE (1955)	3316.772	CS MON IN WELL W/COVER @ C/L INT 165TH ST + AVE W-8 (PROP) 1.0MI S PEARBLOSSOM HWY MKD (T5N R9W 1/4 SEC COR 29-28)	SL 1422
PALMDALE (1955)	3234.713	CS MON IN WELL W/COVER @ C/L INT 165TH ST E + AVE W (PROP) 0.5MI S PEARBLOSSOM HWY MKD (T5N R9W SEC COR 20,21,29,28)	SL 1423
PALMDALE (1955)	3232.421	RDBM TAG IN NE COR OF CONC SLAB IN FRONT OF OLD HSE FOUNDATION 80FT W C/L 165TH ST E + 135FT N AVE W (PROP) 0.5MI S PEARBLOSSOM HWY	SL 1424
BASELINE (1955)	2528.478	CS TAG W END OF N HDWL CN NE COR AVE M + SIERRA HWY 43FT N + 248FT E C/L INT	SL 1425
PALMDALE (1955)	3219.300	USC+GS BR CAP IN 3IN IP 12IN UP LOC 720FT NELY ALG SIERRA HWY FROM OLD INT ANGELES FOREST HWY @ VINCENT + 255FT SELY FROM C/L MKD (3219 - 40)	SL 1523
PALMDALE (1955)	3225.442	USC+GS BR CAP IN 12IN CONC POST 3IN UP LOC 215FT NELY ALG SIERRA HWY FROM OLD INT ANGELES FOREST HWY @ VINCENT + 220FT SELY FROM C/L MKD (F 1000 1958)	SL 1524
PALMDALE (1955)	3224.017	USC+GS BR CAP IN 12IN CONC POST 2IN UP LOC 450FT SLYALG OLD ALIGNMENT ANGELES FOREST HWY FROM INT SIERRA HWY + 35FT W FROM C/L MKD (MONT 2 1958)	SL 1525
PALMDALE (1955)	3229.559	USC+GS BR CAP IN 12IN CONC POST 5IN UP LOC 390FT SWLY ALG SIERRA HWY FROM OLD INT ANGELES FOREST HWY @ VINCENT + 135FT SELY FROM C/L MKD (T-1147 1961)	SL 1526
PALMDALE (1955)	3224.699	USC+GS BR CAP IN 12IN CONC POST 4IN UP LOC 550FT SWLY ALG SIERRA HWY FROM OLD INT ANGELES FOREST HWY @ VINCENT + 45FT SELY FROM C/L MKD (U-431 1935)	SL 1527
PALMDALE (1955)	3198.942	USC+GS BR CAP IN 12IN CONC POST 6IN UP LOC 0.25 MI SWLY ALG SIERRA HWY FROM OLD INT ANGELES FOREST HWY @ VINCENT + 40FT SELY FROM C/L MKD (V-431 1935)	SL 1528
PALMDALE (1955)	3184.177	USC+GS BR CAP IN 12IN CONC POST 4IN UP LOC 0.35 MI SWLY ALG SIERRA HWY FROM OLD INT ANGELES FOREST HWY @ VINCENT + 43FT NWLY FROM C/L MKD (W-431 RESET 1955)	SL 1529
PALMDALE (1955)	3183.579	USC+GS BR CAP IN 12IN CONC POST FLUSH LOC 0.35MI SWLY ALG SIERRA HWY FROM OLD INT ANGELES FOREST HWY @ VINCENT + 80FT SELY FROM C/L MKD (SLOOT 1938)	SL 1530
PALMDALE (1955)	3177.983	CS BR CAP IN 12IN SQ CONC POST 5IN UP LOC 0.4MI SWLY ALG SIERRA HWY FROM OLD INT ANGELES FOREST HWY @ VINCENT + 150FT SELY FROM C/L MKD (SEC 22- SEC 27)	SL 1531
PALMDALE (1955)	3177.798	S CAL EDISON BR CAP IN 2IN IP 3IN UP LOC 0.4MI SWLY ALG SIERRA HWY FROM OLD INT ANGELES FOREST HWY @ VINCENT + 160FT SELY FROM C/L MKD (BM SCE)	SL 1532
PALMDALE (1955)	3182.809	CS BR CAP E END N HDWL CULV NO E-594+15 LOC 0.4 MI ELY ALG SIERRA HWY FROM INT SOLEDAD CN RD + 43FT NLY FROM C/L SIERRA HWY MKD (BM 201-65A 1961)	SL 1533
PALMDALE (1955)	3122.909	CS BR CAP MON 6IN UP + 39FT SWLY FROM PP NO 1122572-E LOC 6FT ELY + 52FT NLY FROM C/L INT SIERRA HWY + SOLEDAD CN RD MKD (BM 201-66 1961)	SL 1534

QUAD-YEAR	ELEV	DESCRIPTION (INCLUDE QUAD AND YEAR IN DESCRIPTION)	BM NUMBER
PALMDALE (1955)	3127.167	CS BR CAP MCN 6IN UP + 12FT WLY FROM PP NO 693454-E LOC 130FT NWLY FROM LA CO FIRE STA @ VINCENT + 55FT NWLY FROM C/L SIERRA HWY MKD (BM 201-67 1961)	SL 1535
PALMDALE (1955)	3081.524	CS BR CAP MCN 6IN UP + 160FT NWLY FROM NW COR CULV NO 332+00 LOC 0.7MI WLY ALG SIERRA HWY FROM LA CO FIRE STA @ VINCENT + 76FT NLY FROM C/L SIERRA HWY MKD (BM 201-68 1961)	SL 1536
PALMDALE (1955)	3005.763	CS BR CAP W END N HDWL CULV NO 303+15 LOC 1.2MI WLY ALG SIERRA HWY FROM LA CO FIRE STA @ VINCENT + 23FT NLY FROM C/L SIERRA HWY MKD (BM 201-69 1961)	SL 1537
PALMDALE (1955)	3081.762	CS BR CAP 5.5FT FROM NW END NLY HDWL CULV NO E-268+70 LOC 1.8MI WLY ALG SIERRA HWY FROM LA CO FIRE STA @ VINCENT + 59FT NLY FROM C/L SIERRA HWY MKD (BM 201-70 1961)	SL 1538
PALMDALE (1955)	3050.102	CS BR CAP E END N HDWL CULV NO E-241+25 LOC 0.95 MI ELY ALG SIERRA HWY FROM INT CROWN VALLEY RD + 33FT NLY FROM C/L SIERRA HWY MKD (BM 201-71 1961)	SL 1539
PALMDALE (1955)	2984.434	CS BR CAP MCN 6IN UP + 40FT WLY FROM PP NO 699557-E LOC 0.5MI ELY ALG SIERRA HWY FROM INT CROWN VALLEY RD + 54FT NLY FROM C/L SIERRA HWY MKD (BM 201-72 1961)	SL 1540
PALMDALE (1955)	2948.581	USC+GS BR CAP IN 12IN RD CONC PCST 6IN UP LOC 1.3MI ELY ALG SOLEDAD CN RD FROM INT ALISO CN RD + 200FT S FROM C/L MKD (C-487 1955)	SL 1542
PALMDALE (1955)	2836.367	USC+GS BR CAP IN 12IN SQ CONC POST 10IN UP LOC 0.25MI NELY ALG OLD SOLEDAD CN RD FROM INT SOLEDAD CN RD + ALISO CN RD + 30FT S OF C/L MKD (K-57 1926)	SL 1543
PALMDALE (1955)	2769.979	USC+GS BR CAP E END N HDWL SPRR CULV NO 424.95 LOC 0.65MI SWLY ALG SOLEDAD CN RD FROM INT ALISO CN RD + 110FT SELY FROM C/L MKD (B-487 1955)	SL 1544
PALMDALE (1955)	2777.207	USC+GS BR CAP IN 12IN RD CONC SLEEVE 5IN UP LOC 0.7MI SWLY ALG SOLEDAD CN RD FROM INT ALISO CN RD + 100FT SELY FROM C/L MKD (U-1147 1961)	SL 1545
BASELINE (1955)	2964.273	CS BR CAP MCN FLUSH + 8FT SE FROM PP NO 593220-H LOC 51FT NLY + 19FT ELY FROM C/L INT SIERRA HWY + CROWN VALLEY RD MKD (RE 2177)	SL 1546
BASELINE (1955)	2961.880	CS BR CAP MCN 6IN UP + 30FT NLY FROM PP NO 536154-E LOC 44FT SLY + 35FT WLY FROM C/L INT SIERRA HWY + CROWN VALLEY RD + GOVERNOR MINE RD MKD (BM 201-73 1961)	SL 1547
BASELINE (1955)	2931.104	L+BN CTR CULV HDWL 30FT W C/L CROWN VALLEY RD + 700FT S C/L SIERRA HWY	SL 1548
BASELINE (1955)	2866.561	RDBM MON IN WELL W/COVER 6FT SW OF PP NO 533161E 42FT W C/L CROWN VALLEY RD + 100FT N DIRT ROAD TO HSE NO 33062 + 0.4MI S SIERRA HWY 2IN IP WITNESS 2FT W OF MON	SL 1549
BASELINE (1955)	2788.911	RDBM MON IN WELL W/COVER 6FT NW PP NO 536168E 35FT W C/L CROWN VALLEY RD + 1.0MI S SIERRA HWY SET 2IN IP WITNESS 2FT W OF MON	SL 1550

QUAD-YEAR	ELEV	DESCRIPTION (INCLUDE QUAD AND YEAR IN DESCRIPTION)	BM NUMBER
BASELINE (1955)	2716.615	L+BN IN MOST NLY CONC WALK OF SOLEDAD-AGUA DULCE SCHOGL 42FT E C/L 4TH ST (CROWN VALLEY RD) + 50FT N SYRACUSE AVE 1.4MI S SIERRA HWY	SL 1551
BASELINE (1955)	2701.961	L+BN IN CONC DRWY TO HSE NO 32109 4TH ST (CROWN VALLEY RD) 32FT W C/L 4TH ST + 50FT N C/L GILLESPIE AVE PROD FROM E	SL 1552
BASELINE (1955)	2698.564	L+BN NR N END OF GAS PUMP ISLAND @ SERVICE STA NO 31922 4TH ST (CROWN VALLEY RD) @ SE COR OF SMITH AVE 55FT S + 62FT E C/L INT	SL 1553
BASELINE (1955)	2698.765	L+T NR W END OF CONC HDWL LRGE CULV 22FT N C/L SOLEDAD CN RD + 70FT E C/L CROWN VALLEY RD (4TH ST)	SL 1554
BASELINE (1955)	2697.901	USC+GS BR CAP IN 12 IN SQ CONC POST 12IN UP LOC 230FT SLY + 30FT ELY INT SOLEDAD CN RD + 4TH ST @ACTON MKD (H-53 1926)	SL 1555
PALMDALE (1955)	2588.020	CS MON IN WELL 22IN DN @ C/L AVE N + 45TH ST W	SL 1794
PALMDALE (1955)	2561.009	2IN IP WITH CO ENG TAG 6IN UP ON NW COR AVE N + 40TH ST W 45FT N + 50FT W C/L INT NEAR PP DEAD MAN	SL 1795
PALMDALE (1955)	2558.483	CS MON IN WELL 24IN DN @ C/L INT AVE N + 40TH ST W MKD (R12W T6N 12-7)	SL 1796
PALMDALE (1955)	2575.244	CS MON IN WELL 24IN DN @ C/L INT AVE N + PROPOSED 35TH ST W MKD (R12W T6N 6-7)	SL 1797
PALMDALE (1955)	2579.051	2IN IP WITH CO ENG TAG 6IN UP ON SE COR AVE N + PROPOSED 35TH ST W 45FT S + 50FT E C/L INT	SL 1798
PALMDALE (1955)	2584.317	CS MON IN WELL 12IN DN @ C/L INT AVE N + 30TH ST W MKD (T6N R12W 6-5-7-8-)	SL 1799
PALMDALE (1955)	2585.608	2IN IP WITH CO ENG TAG 6IN UP ON NE COR AVE N + 30TH ST W 45FT N + 50FT E C/L INT	SL 1800
PALMDALE (1955)	2596.723	2IN IP WITH CO ENG TAG 6IN UP ON NW COR AVE N + 25TH ST W 45FT N + 50FT W C/L INT	SL 1801
PALMDALE (1955)	2595.534	CS MON IN WELL 12IN DN @ C/L INT AVE N + 25TH ST W MKD (R12W T6N 5-8)	SL 1802
PALMDALE (1955)	2552.832	CS MON IN WELL 12IN DN @ C/L INT 30TH ST W + AVE M8 MKD (R12W T6N 1/4 COR 5-6)	SL 1803